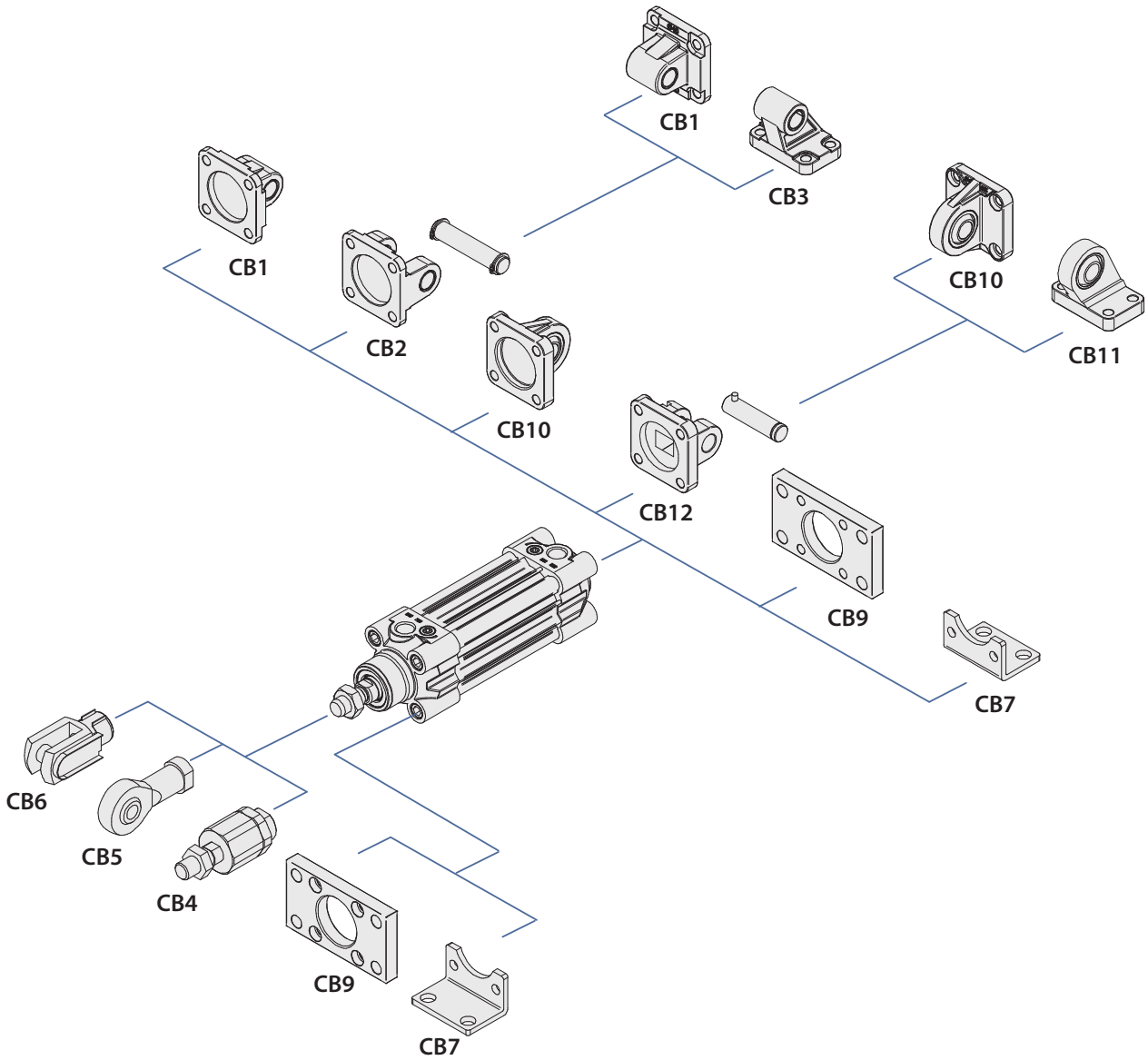


- cilinders
- hand- en mechanisch bediende ventielen
- elektrisch bediende ventielen
- luchtbediende ventielen
- magneetventielen
- luchtbediende schuine klepafsluiters
- luchtverzorging



Type	Omschrijving	Pagina
CB4	Flexibele zuigerstangkop	19
CB5	Kogelkopscharnier	19
CB6	Gaffel met clip	19
CB7	Grondplaatbevestiging	20
CB9	Montageflens	20
CB1	Achter/contrascharnier	20

Type	Omschrijving	Pagina
CB12	Achterscharnier inclusief pen	21
CB2	Achterscharnier inclusief pen	21
CB3	Contrascharnier	21
CB10	Achter/contrascharnier	22
CB11	Achterscharnier	22

Any questions? Please contact us.

**Morskate Aandrijvingen BV**  
 Oosterveldsingel 47A  
 7558 PJ Hengelo (Ov)  
 The Netherlands

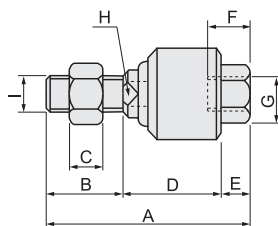
NL  
 T +31 (0)74 - 760 11 11  
 info@morskateaanrijvingen.nl  
 www.morskateaanrijvingen.nl

DE  
 T +49 692 - 222 34 95  
 info@morskateantriebstechnik.de  
 www.morskateantriebstechnik.de

EN  
 T +31 (0)74 - 760 11 11  
 info@morskatedrivetechnology.com  
 www.morskatedrivetechnology.com

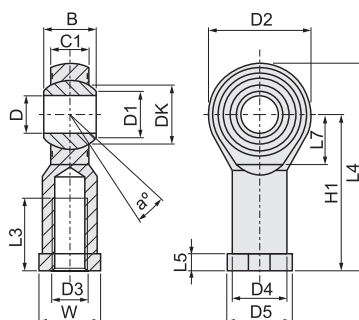


### CB4 flexibele zuigerstangkop



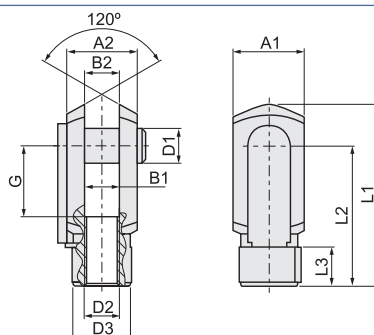
Ø	Type	Artikelnr.	A	B	C	D	E	F	G	H	I
32	CB4-M10x1,25	PI30338	58	22	6	28	8	12	M10x1,25	10	M10x1,25
40	CB4-M12x1,25	PI30339	58	22	7	29	7	12	M12x1,25	12	M12x1,25
50/63	CB4-M16x1,5	PI30340	90	27	8	51	12	14	M16x1,5	15	M16x1,5
80/100	CB4-M20x1,5	PI30341	102	29	10	59	14	18	M20x1,5	22	M20x1,5

### CB5 kogelkopscharnier



Ø	Type	Artikelnr.	a <sup>0</sup>	B	C1	D1	D2	D3	D4	D5	DK	D	H1	L3	L4	L5	L7	W
32	CB5-M10x1,25	PI30345	13	14	10,5	12,9	28	M10x1,25	15	19	19,05	10	43	20	57	6,5	15	17
40	CB5-M12x1,25	PI30346	13	16	12	15,4	32	M12x1,25	17,5	22	22,22	12	50	22	66	6,5	17	19
50/63	CB5-M16x1,5	PI30347	15	21	15	19,3	42	M16x1,5	22	27	28,57	16	64	28	85	8	23	22
80/100	CB5-M20x1,5	PI30348	14	25	18	24,3	50	M20x1,5	27,5	34	34,92	20	77	33	102	10	27	30
125	CB5-M27x2	PI30349	17	37	25	34,8	70	M27x2	40	50	50,8	30	110	51	145	15	36	41

### CB6 gaffel met clip\*

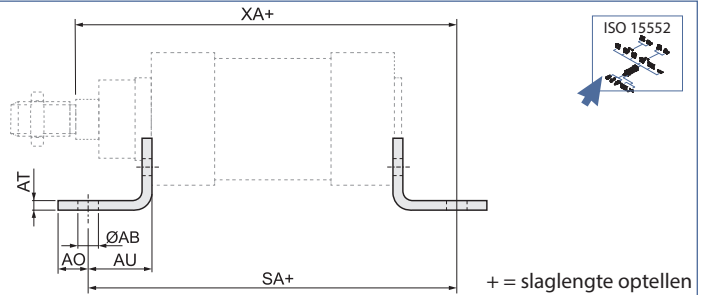
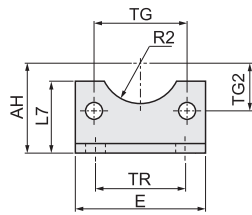


\* CB6-M27x2 met pen

Ø	Type	Artikelnr.	A1	A2	B1	B2	G	L1	L2	L3	D1	D2	D3
32	CB6-M10x1,25	PI30352	20	20	10	10	20	52	40	15	10	M10x1,25	18
40	CB6-M12x1,25	PI30353	24	24	12	12	24	62	48	18	12	M12x1,25	20
50/63	CB6-M16x1,5	PI30354	32	32	16	16	32	83	64	24	16	M16x1,5	26
80/100	CB6-M20x1,5	PI30355	40	40	20	20	40	105	80	30	20	M20x1,5	34
125	CB6-M27x2*	PI30356	55	55	30	30	54	148	110	38	30	M27x2	48

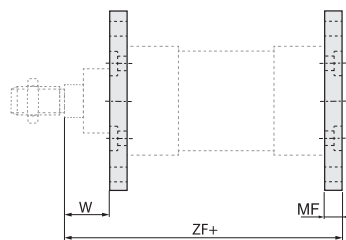
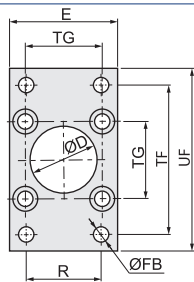
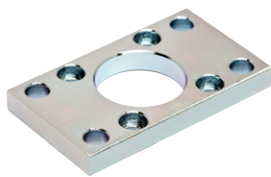


### CB7 grondplaatbevestiging



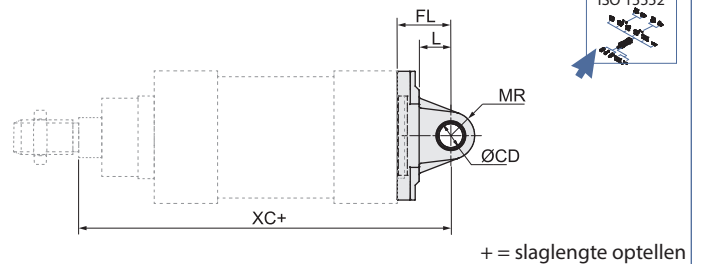
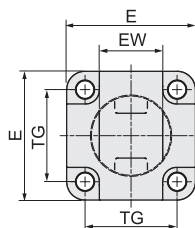
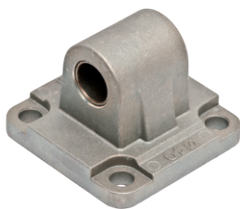
Ø	Type	Artikelnr.	AB	AH	AO	AT	AU	E	L7	R2	SA+	TG2	TG	TR	XA+
32	CB7-32	PI30357	7	32	11	4	24	45	30	15	142	16,25	32,5	32	144
40	CB7-40	PI30358	10	36	8	4	28	52	30	17,5	161	19	38	36	163
50	CB7-50	PI30359	10	45	15	5	32	65	36	20	170	23,25	46,5	45	175
63	CB7-63	PI30360	10	50	13	5	32	75	35	22,5	185	28,25	56,5	50	190
80	CB7-80	PI30361	12	63	14	6	41	95	47	22,5	210	36	72	63	215
100	CB7-100	PI30362	14,5	71	16	6	41	115	53	27,5	220	44,5	89	75	230
125	CB7-125	PI30363	16,5	90	25	8	45	140	70	30	250	55	110	90	270

### CB9 montageflens



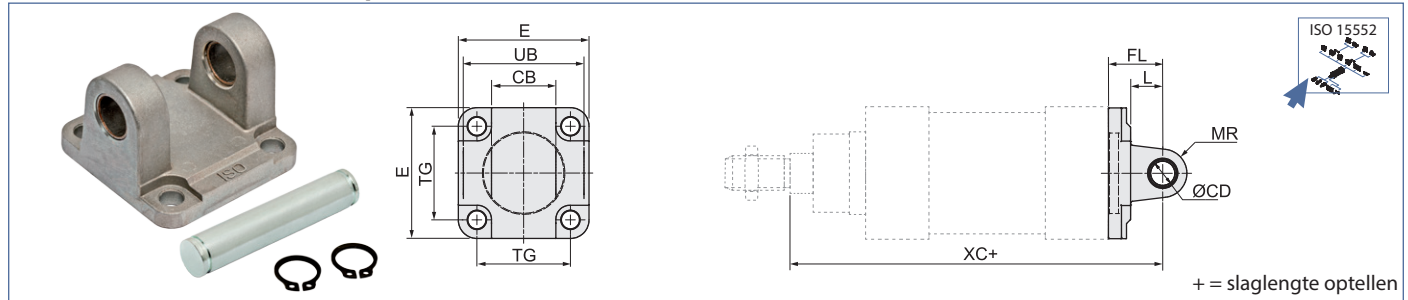
Ø	Type	Artikelnr.	E	MF	D	FB	R	TF	TG	UF	W	ZF+
32	CB9-32	PI30373	45	10	30	7	32	64	32,5	80	16	130
40	CB9-40	PI30374	52	10	35	9	36	72	38	90	18,7	145
50	CB9-50	PI30375	65	12	40	9	45	90	46,5	110	23,6	155
63	CB9-63	PI30376	75	12	45	9	50	100	56,5	120	23,9	170
80	CB9-80	PI30377	95	16	45	12	63	126	72	150	29,4	190
100	CB9-100	PI30378	115	16	55	14	75	150	89	170	33,3	205
125	CB9-125	PI30379	140	20	60	16	90	180	110	205	45	245

### CB1 Achter/contrascharnier



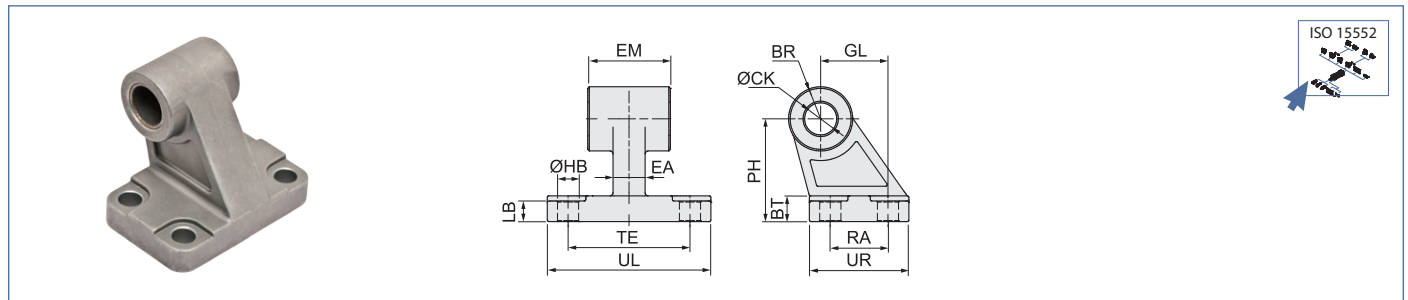
Ø	Type	Artikelnr.	EW	E	FL	L	MR	CD	TG	XC+
32	CB1-32	PI30300	26	45	22	13	10	10	32,5	142
40	CB1-40	PI30301	28	52	25	16	12	12	38	160
50	CB1-50	PI30302	32	65	27	16	12	12	46,5	170
63	CB1-63	PI30303	40	75	32	21	16	16	56,5	190
80	CB1-80	PI30304	50	93	36	22	16	16	72	210
100	CB1-100	PI30305	60	110	41	27	20	20	89	230
125	CB1-125	PI30306	70	134	50	30	25	25	110	275

### CB2 achterscharnier (incl. pen)



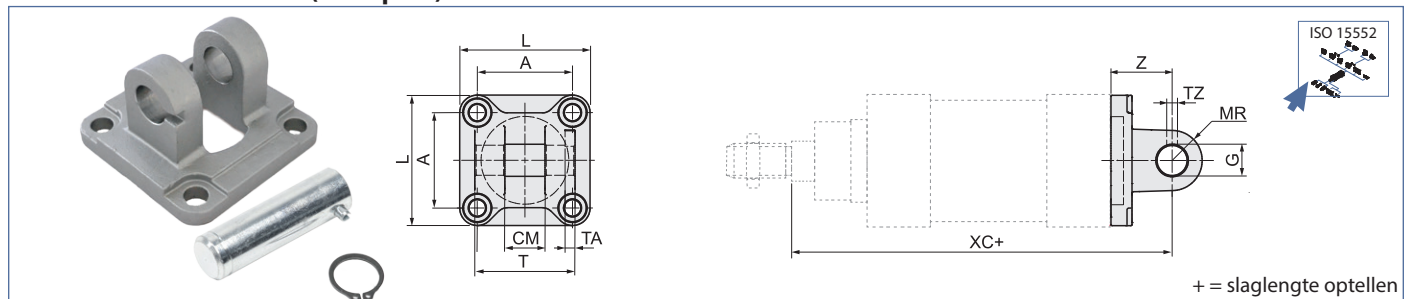
Ø	Type	Artikelnr.	CB	E	FL	L	MR	CD	TG	UB	XC+
32	CB2-32	PI30309	26	45	22	13	10	10	32,5	45	142
40	CB2-40	PI30310	28	52	25	16	12	12	38	52	160
50	CB2-50	PI30311	32	65	27	16	12	12	46,5	60	170
63	CB2-63	PI30312	40	75	32	21	16	16	56,5	70	190
80	CB2-80	PI30313	50	93	36	22	16	16	72	90	210
100	CB2-100	PI30314	60	110	41	27	20	20	89	110	230
125	CB2-125	PI30315	70	134	50	30	25	25	110	130	275

### CB3 contrascharnier



Ø	Type	Artikelnr.	BR	BT	CK	EA	EM	GL	LB	HB	PH	RA	TE	UL	UR
32	CB3-32	PI30318	10	8	10	10	26	21	6,4	6,6	32	18	38	51	31
40	CB3-40	PI30319	11	10	12	15	28	24	8,4	6,6	36	22	41	54	35
50	CB3-50	PI30320	13	12	12	16	32	33	10,4	9	45	30	50	65	45
63	CB3-63	PI30321	15	14	16	16	40	37	12,4	9	50	35	52	67	50
80	CB3-80	PI30322	15	14	16	20	50	47	11,5	11	63	40	66	86	60
100	CB3-100	PI30323	19	17	20	20	60	55	14,5	11	71	50	76	96	70
125	CB3-125	PI30324	22,5	20	25	30	70	70	16,8	14	90	60	94	124	90

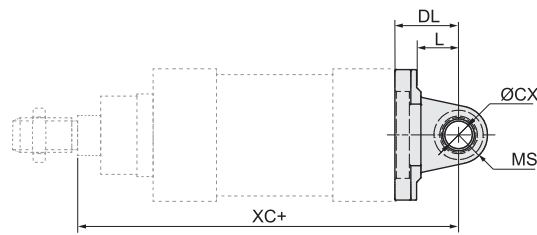
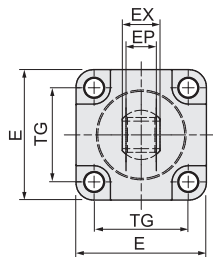
### CB12 achterscharnier (incl. pen)



Ø	Type	Artikelnr.	A	CM	G	L	MR	TA	TZ	T	Z	XC+
32	CB12-32	PI30398	32,5	14	10	45	10	3	3,3	34	22	142
40	CB12-40	PI30399	38	16	12	52	12	4	4,3	40	25	160
50	CB12-50	PI30400	46,5	21	16	65	14	4	4,3	45	27	170
63	CB12-63	PI30401	56,5	21	16	75	18	4	4,3	51	32	190
80	CB12-80	PI30402	72	25	20	95	20	4	4,3	65	36	210
100	CB12-100	PI30403	89	25	20	115	22	4	6,3	75	41	230
125	CB12-125	PI30404	110	37	30	140	25	6	6,3	97	50	275



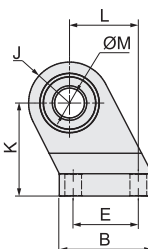
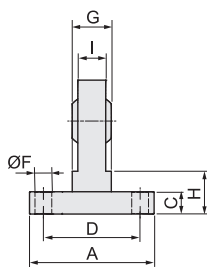
### CB10 Achter/contrascharnier



+ = slaglengte optellen

Ø	Type	Artikelnr.	DL	EP	EX	E	L	MS	CX	TG	XC+
32	CB10-32	PI30382	22	10,5	14	45	12	16	10	32,5	142
40	CB10-40	PI30383	25	12	16	52	15	18	12	38	160
50	CB10-50	PI30384	27	15	21	65	15	21	16	46,5	170
63	CB10-63	PI30385	32	15	21	75	20	23	16	56,5	190
80	CB10-80	PI30386	36	18	25	95	20	28	20	72	210
100	CB10-100	PI30387	41	18	25	115	25	30	20	89	230
125	CB10-125	PI30388	50	25	37	140	30	40	30	110	275

### CB11 contrascharnier



Ø	Type	Artikelnr.	A	B	C	D	E	G	H	I	J	K	L	F	M
32	CB11-32	PI30391	51	31	10	38	18	14	16	10,5	15	32	21	6,6	10
40	CB11-40	PI30392	54	35	10	41	22	16	16	12	17	36	24	6,6	12
50	CB11-50	PI30393	65	45	12	50	30	21	21	15	20	45	33	9	16
63	CB11-63	PI30394	67	50	12	52	35	21	23	15	22	50	37	9	16
80	CB11-80	PI30395	86	60	14	66	40	25	32	18	27	63	47	11	20
100	CB11-100	PI30396	96	70	14	76	50	25	33	18	29	71	55	11	20

Any questions? Please contact us.

**Morskate Aandrijvingen BV**  
Oosterveldsingel 47A  
7558 PJ Hengelo (Ov)  
The Netherlands

NL  
T +31 (0)74 - 760 11 11  
info@morskateaandrijvingen.nl  
www.morskateaandrijvingen.nl

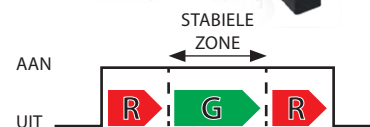
DE  
T +49 692 - 222 34 95  
info@morskateantriebstechnik.de  
www.morskateantriebstechnik.de

EN  
T +31 (0)74 - 760 11 11  
info@morskatedrivetechnology.com  
www.morskatedrivetechnology.com





**NIEUW! S2-P-..-DL**  
Nauwkeurig positioneren met de 2 kleuren LED's



### Specificaties S2 naderingsschakelaars

	S2-R-6M	S2-P-6M	S2-P-M8	S2-P-5M-DL	S2-P-M8-DL
Werking	reed	elektronisch			
Elektrische aansluiting	kabel 2-aderig	kabel 3-aderig	kabel met stekker M8x1	kabel 3-aderig	kabel met stekker M8x1
Schakelfunctie	normaal open	PNP normaal open	PNP normaal open	PNP normaal open	PNP normaal open
Spanning	5-120 V AC/DC	5-30 VDC	5-30 VDC	10-28 VDC	10-28 VDC
Max. stroomsterkte	100 mA	200 mA	200 mA	80 mA	80 mA
Max. schakelvermogen	10 W				
Schakelweergave	gele LED	gele LED	gele LED	rood/groene LED's	rood/groene LED's
Kabelkleur	zwart	zwart	zwart	zwart	zwart
Kabelmateriaal	PVC	PVC	PVC	PU	PU
Kabellengte	6 mtr	6 mtr	0,3 mtr	5 mtr	0,3 mt
Beschermingsgraad	IP67				

### Artikelnummers S2 naderingsschakelaars

Type	Artikelnr.	Omschrijving
S2-R-6M	PI30290	S2-R-6M REED naderingsschakelaar ISO15552/21287
S2-P-6M	PI30297	S2-P-6M PNP naderingsschakelaar ISO15552/21287
S2-P-M8	PI30292	S2-P-M8 PNP naderingsschakelaar ISO15552/21287
S2-P-5M-DL	PI30293	S2-P-5M-DL PNP DUO-LED naderingsschakelaar ISO15552/21287
S2-P-M8-DL	PI30294	S2-P-M8-DL PNP DUO-LED naderingsschakelaar ISO15552/21287
CK-2M-M8	PI30298	CK-2M-M8 Connector kabel lengte 2 meter t.b.v. M8
CK-5M-M8	PI30299	CK-5M-M8 Connector kabel lengte 5 meter t.b.v. M8

### Afmetingen S2 naderingsschakelaars

#### S2-R-6M

#### S2-P-6M/M8

#### S2-P-5M/M8-DL

