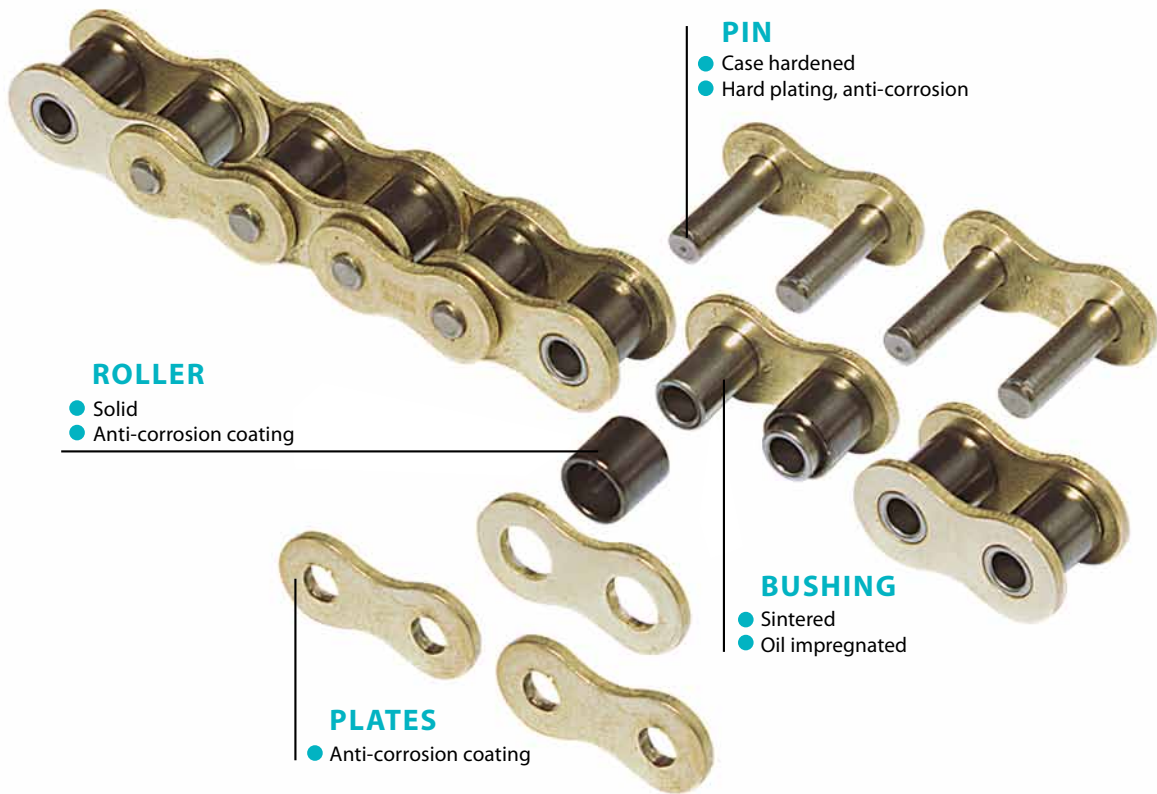


## ENDURO MAINTENANCE FREE CHAINS

### TECHNICAL CHARACTERISTICS

- ➔ "HEAVY WALL" SINTERED BUSHING, IMPREGNATED WITH USDA H1 FOOD APPROVED OIL
- ➔ HARD PLATED PIN
- ➔ GALVANICALLY COATED PLATES AND ROLLERS FOR RESISTANCE TO MILDLY AGGRESSIVE ENVIRONMENT

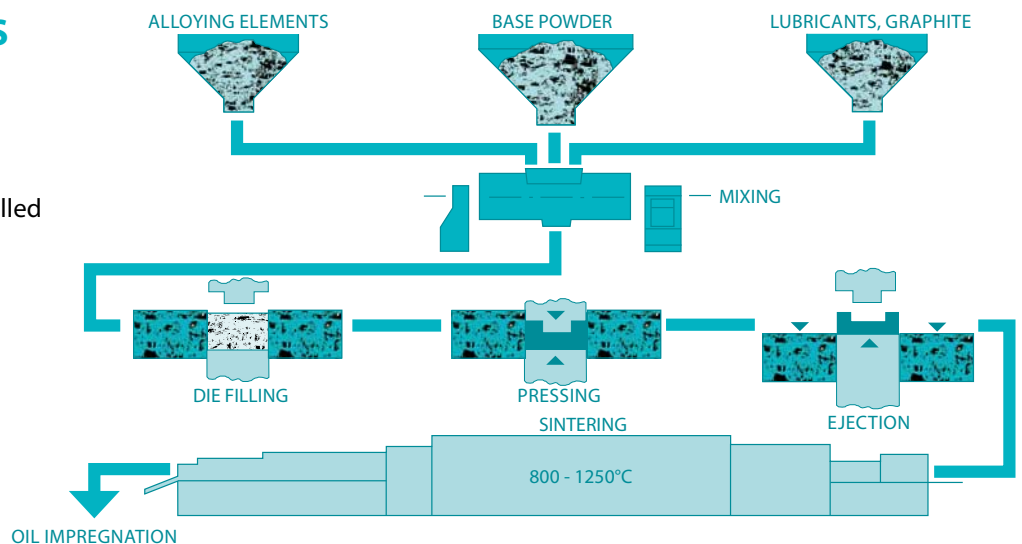


- Sintered bushing, impregnated with high performance lubricant
- Optimized bushing wall thickness for increased wear performance

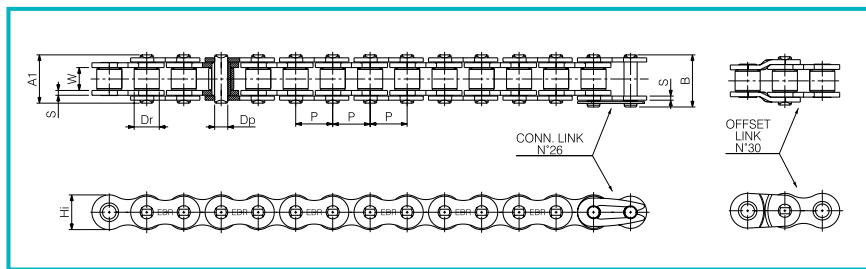
### THE SINTERING PROCESS

A blend of metallic powders is pressed into the desired shape and sintered at high temperature.

The porosity left in the material is then filled with high quality oil through a vacuum process.



## SINGLE STRAND



Regina	Iso	Pitch		Roller	Inside	Plate	Plate	Pin	Pin	Max	Working	Average	Suggested	Std. loose parts	
ref	ref	mm	inches	D <sub>r</sub>	W	Hi	S	D <sub>p</sub>	A1	Width	Surface	Tensile	Working	Conn.	Offset
				mm	mm	mm	mm	mm	mm	mm	mm <sup>2</sup>	kN	Load (max)	Link	Link

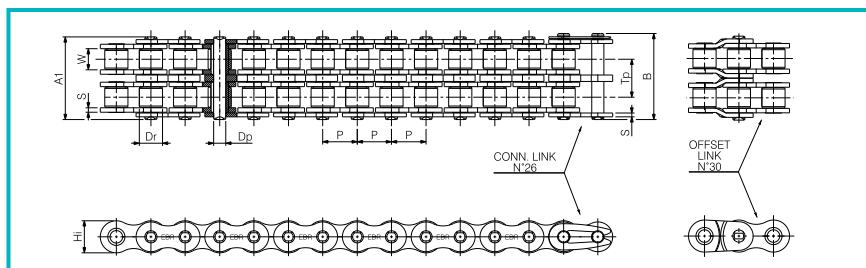
## EUROPEAN SERIES

126BS	08B-1	12,70	1/2	8,51	7,75	11,85	1,63/1,40	4,45	16,50	24,00	50	18,60	1000	26	30
136BS	10B-1	15,875	5/8	10,16	9,65	15,15	2,00/1,53	5,09	19,60	27,00	69	24,80	1380	26	30
140BS	12B-1	19,05	3/4	12,07	11,68	18,08	1,85/1,70	5,72	22,50	30,00	89	33,00	1780	26	30
147BS	16B-1	25,40	1	15,88	17,02	21,08	3,80/3,00	8,28	35,90	46,00	210	63,35	4200	26	30

## AMERICAN SERIES

A40BS	08A-1	12,70	1/2	7,92	7,85	11,85	1,63/1,53	3,98	16,50	23,00	44	17,15	880	26	30
A50BS	10A-1	15,875	5/8	10,16	9,40	15,15	2,00/2,00	5,09	20,50	28,00	70	26,00	1400	26	30
A60BS	12A-1	19,05	3/4	11,91	12,57	18,08	2,30/2,30	5,72	25,80	33,00	101	37,25	2020	26	30
A80BS	16A-1	25,40	1	15,88	15,75	24,13	3,15/3,15	7,94	33,50	40,00	180	64,70	3600	26	30

## DOUBLE STRAND



Regina	Iso	Pitch		Roller	Inside	Plate	Plate	Pin	Pin	Max	Working	Average	Suggested	Std. loose parts		Trasversal
ref	ref	mm	inches	D <sub>r</sub>	W	Hi	S	D <sub>p</sub>	A1	Width	Surface	Tensile	Working	Conn.	Offset	Pitch
				mm	mm	mm	mm	mm	mm	mm	mm <sup>2</sup>	kN	Load (max)	Link	Link	mm

## EUROPEAN SERIES

226BS	08B-2	12,70	1/2	8,51	7,75	11,85	1,63/1,40	4,45	30,40	38,20	100	35,10	2000	26	30	13,92
236BS	10B-2	15,875	5/8	10,16	9,65	15,15	2,00/1,53	5,09	35,80	44,00	138	42,00	2760	26	30	16,59
240BS	12B-2	19,05	3/4	12,07	11,68	18,08	1,85/1,70	5,72	42,00	51,20	178	66,00	3560	26	30	19,46
247BS	16B-2	25,40	1	15,88	17,02	21,08	3,80/3,00	8,28	68,00	78,80	420	127,50	8400	26	30	31,88

## AMERICAN SERIES

A40BS-2	08A-2	12,70	1/2	7,92	7,85	11,85	1,63/1,53	3,98	30,90	38,60	88	34,30	1760	26	30	14,38
A50BS-2	10A-2	15,875	5/8	10,16	9,40	15,15	2,00/2,00	5,09	38,40	46,60	140	52,00	2800	26	30	18,11
A60BS-2	12A-2	19,05	3/4	11,91	12,57	18,08	2,30/2,30	5,72	48,80	58,00	202	74,50	4040	26	30	22,78
A80BS-2	16A-2	25,40	1	15,88	15,75	24,13	3,15/3,15	7,94	62,70	73,50	360	129,45	7200	26	30	29,29

Some dimensions of ENDURO chain may differ from ISO standard, but the engagement with standard ISO sprocket is guaranteed.

## SPECIAL CONFIGURATIONS

Regina ENDURO chains can be equipped with attachment plates or produced in special configurations.



Attachment plates



Extended pins



Fly roller



Retractable pusher



Extended pins

## FIELDS OF APPLICATION

INDUSTRIES

- Packaging
- Food
- Printing
- Automotive
- Tissue
- Electronics
- Medical
- Textile
- Conveyors
- and more...

