

# MiniLog-Comm®

## Communication Software for Stepper Motor Controllers

### MiniLog-Comm

The Phytron communication software MiniLog-Comm is a Windows® program for easy programming and operating.

It supports the following stepper motor controllers:

MCC, OMC, TMC or IXEα.

MiniLog-Programs<sup>1</sup> are edited, transferred to the controllers, tested, printed and stored by the MiniLog-Comm software.

Depending on the controller type up to 8 axes can be managed simultaneously.

The PC is connected to the controller by USB, RS 485, RS 232 or Ethernet.

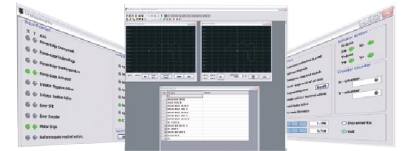
<sup>1</sup>MiniLog is a well-tried instruction code for the programming of the Phytron stepper motor controllers.

### Functions

- ▶ Start controller program
- 🔍 Search controller
- 📄 Query of variables during program sequence
- 🗨 Dialog Open operation
- 📄 Send parameter
- 📍 Show current x-y-position
- 🚦 Dialog Open status monitor

MiniLog-Comm software offers further comfortable functions :

- Test mode for checking the programs stepwise
- Direct instruction input
- Status window
- Motion Creator converts the graphic of operational profiles in MiniLog programs



### Technical Information

- Communication software for the Phytron stepper motor controllers MCC, OMC, TMC und IXEα
- MiniLog-Comm® is a registered trademark of the Phytron GmbH.
- Putting into operation, configuration and error diagnosis
- Programming and operation of the connected controllers via PC
- Online status display for safe operation and easy maintenance

Editing, testing, storing, transferring and managing of customer owned programs acc. to DIN 66025 or in the Phytron MiniLog format

System requirements:

- Windows® 2000, XP, Vista or 7
- Browser independent installation software
- Installation from CD
- Connection to the PC via USB, RS 485, RS 232 or Ethernet
- Graphical interface
- Menu dialog German or English
- 

### Example: Activation of 3 axes via USB-RS 485-converter

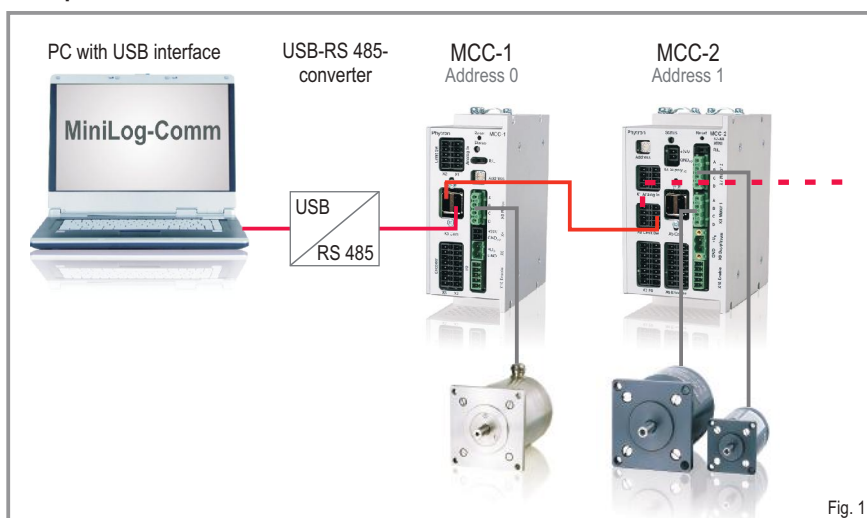


Fig. 1

# Menu Examples

## Menu Examples

The screenshot displays the Minilog-Comm software interface. At the top, there is a menu bar (File, View, Transmission, Controller, Options, Help) and a toolbar with icons for file operations and a numeric keypad (0-9, A-F). The main workspace contains several windows:

- Show Position:** A graph showing a yellow diamond-shaped path on a grid. The axes range from -4000.0 to 4000.0. Below the graph are controls for Div X (1000.00), Div Y (500.00), and Update-Time (20 ms).
- Helpfile Beispiel.mcf:** A graph showing a blue path on a grid. The axes range from -8000.0 to 10000.0. Below the graph are buttons for Set, Center View, Generate Minilog, Delete, and Close.
- Operation:** A control panel with buttons for Axis2+ (Y+), Axis1- (X-), Axis1+ (X+), and Axis2- (Y-). It also includes MOP functions (Axis1 MOP-, Axis1 MOP+, Axis2 MOP-, Axis2 MOP+), a list of existing axes (Axis 1-8), and a counter value section for Axis1 (X) and Axis2 (Y). A large red button labeled "! STOP !" is prominent. At the bottom, there are frequency sliders for Axis1 (X) and Axis2 (Y) ranging from 0 to 40k.

The status bar at the bottom shows "MCC COM1 <Open> 115200, n, 8, 1 NUM".

Any questions? Please contact us.

**Morskate Aandrijvingen BV**  
Oosterveldsingel 47A  
7558 PJ Hengelo (Ov)  
The Netherlands

NL  
T +31 (0)74 - 760 11 11  
info@morskateaanrijvingen.nl  
www.morskateaanrijvingen.nl

DE  
T +49 692 - 222 34 95  
info@morskateantriebstechnik.de  
www.morskateantriebstechnik.de

EN  
T +31 (0)74 - 760 11 11  
info@morskatedrivetechnology.com  
www.morskatedrivetechnology.com

**Morskate®**



Any questions? Please contact us.

**Morskate Aandrijvingen BV**

Oosterveldsingel 47A  
7558 PJ Hengelo (Ov)  
The Netherlands

NL

T +31 (0)74 - 760 11 11  
info@morskateaandrijvingen.nl  
www.morskateaandrijvingen.nl

DE

T +49 692 - 222 34 95  
info@morskateantriebstechnik.de  
www.morskateantriebstechnik.de

EN

T +31 (0)74 - 760 11 11  
info@morskatedrivetechnology.com  
www.morskatedrivetechnology.com