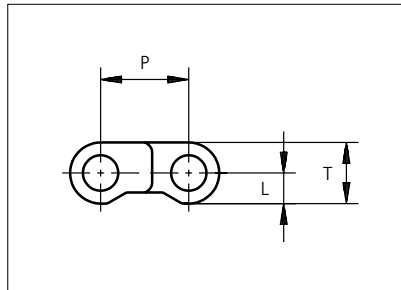
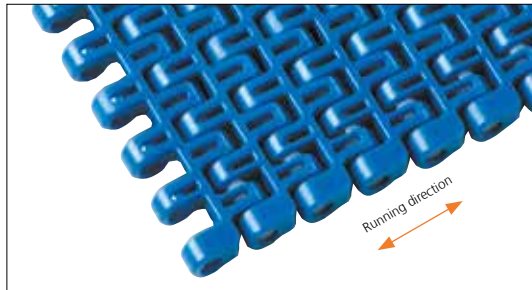


Plastic Modular Belt

Series **uni M-SNB** Type **M3 14%**



Straight running belt
 Nominal pitch: 12.7 mm (0.50 in)
 Surface type: Flat
 Surface opening: 14%
 Backflex radius: 20.0 mm (0.80 in)
 Pin diameter: ø5 mm (0.20 in)

Belt material & color	POM-D B		POM-LF BR		PP W		PE N		mm	in	mm	in		
	Pin material & color		Pin material & color		Pin material & color									
	PP B		PP W		PP B		PP W		P (Nominal)	12.7	0.50	T	8.8	0.35
	PE N		PE N		PE N		PE N		L	4.4	0.17	-	-	-

Non standard material and color: See uni Material and Color Overview.

Alternative pin and lock materials: G-lock: PA6.6 **N** Pin: PA6.6 **B** **W** **PE** **W** **PBT** **LG** **SS304** Endlock: PP **B** **W**
 Lockpin: PBT **LG** PA6.6 **D** **PP** **B** **W** **PE** **N**

Belt width		Permissible tensile force (Belt/pin material)						Belt weight (Belt/pin material)						*Min. No. drive sprocket per shaft	Number of wear strips (Min. No.)	
		POM/PP		PP/PP		PE/PE		POM/PP		PP/PP		PE/PE			**Carry (pcs)	**Return (pcs)
mm	in	N	lbf	N	lbf	N	lbf	kg/m	lb/ft	kg/m	lb/ft	kg/m	lb/ft			
77	3.0	1155	260	578	130	347	78	0.5	0.33	0.3	0.21	0.3	0.23	2	2	2
153	6.0	2295	516	1148	258	689	155	1.0	0.65	0.6	0.42	0.7	0.45	2	2	2
229	9.0	3435	772	1718	386	1031	232	1.4	0.97	0.9	0.63	1.0	0.68	2	2	2
305	12.0	4575	1028	2288	514	1373	309	1.9	1.29	1.3	0.84	1.3	0.90	3	3	2
381	15.0	5715	1285	2858	642	1715	385	2.4	1.61	1.6	1.05	1.7	1.13	3	3	2
458	18.0	6870	1544	3435	772	2061	463	2.9	1.94	1.9	1.26	2.0	1.35	4	4	2
534	21.0	8010	1801	4005	900	2403	540	3.4	2.26	2.2	1.47	2.3	1.58	4	4	2
610	24.0	9150	2057	4575	1028	2745	617	3.8	2.58	2.5	1.68	2.7	1.80	5	5	3
686	27.0	10290	2313	5145	1157	3087	694	4.3	2.90	2.8	1.89	3.0	2.03	5	5	3
762	30.0	11430	2569	5715	1285	3429	771	4.8	3.23	3.1	2.10	3.4	2.25	6	6	3
839	33.0	12585	2829	6293	1415	3776	849	5.3	3.55	3.4	2.31	3.7	2.48	6	6	3
915	36.0	13725	3085	6863	1543	4118	926	5.8	3.87	3.8	2.52	4.0	2.71	7	7	4

Additional standard belt widths are available in steps of 76.2 mm (3.00 in.) Additional non-standard belt widths are available in steps of 12.7 mm (0.50 in.)

1982	78.0	29730	6683	14865	3342	8919	2005	12.5	8.39	8.1	5.46	8.7	5.86	14	14	7
------	------	-------	------	-------	------	------	------	------	------	-----	------	-----	------	----	----	---

Additional standard belt widths are available in steps of 76.2 mm (3.00 in.) Additional non-standard belt widths are available in steps of 12.7 mm (0.50 in.)

2972	117.0	44580	10022	22290	5011	13374	3006	18.7	12.58	12.2	8.19	13.1	8.79	20	20	10
------	-------	-------	-------	-------	------	-------	------	------	-------	------	------	------	------	----	----	----

General belt tolerance is +0/-0.4% at 23°C/73°F and 50% RH. For exact belt width contact Customer Service. Non standard belt width on request.

*Max. Load per Drive Sprocket. Belt material: POM-SLF 1000 N (225 lbf). PP 800 N (180 lbf). PE 800 N (180 lbf)

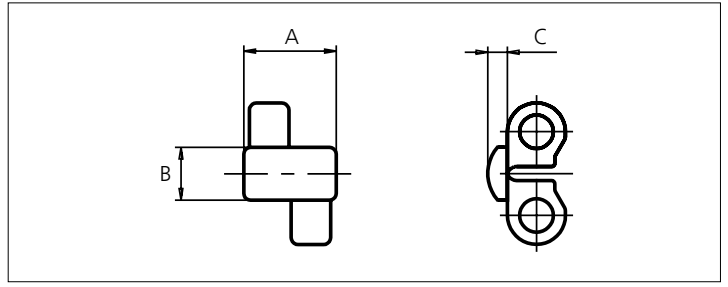
**Max. Spacing between wear strips. Carry: 152 mm (6 in.) ; Return: 304 mm (12 in.)

= Single Link

Any questions? Please contact us.

Accessories

Top/Bottom Insert



Type	Rubber material & color	A		B		C	
		mm	in	mm	in	mm	in
Rubber	01	14.0	0.55	8.0	0.31	3.0	0.12

Rubber inserts can be assembled in any belt surface upon customer request.
Non Standard material and color: See uni Material and Color Overview.

Sprocket

No of teeth	Pilot bore	Bore size												Overall diameter		Pitch diameter		Hub diameter		A-dimension		B-dimension		Single row/Two way	Double row/Two way	Molded LG	Machined LG
		in	0.75	0.78	0.98	1.00	1.18	1.25	1.50	1.57	2.36	2.5	3.54														
		mm	19.1	20.0	25.0	25.4	30.0	31.8	38.1	40.0	60.0	63.5	90.0	mm	in	mm	in	mm	in	mm	in						
Z10	x												41.5	1.63	41.6	1.64	28.0	1.10	16.1	0.63	25.0	0.98	x		x		
Z19	x			●	●	●	●	■					79.0	3.11	78.1	3.07	65.0	2.56	34.1	1.34	43.0	1.69	x		x		
Z28	x				●	●	●	■	●				116.2	4.57	115	4.53	65.0	2.56	52.2	2.06	61.1	2.41	x		x		
Z38	x					●	●	■	●	■			157.4	6.20	156	6.14	100.0	2.95	72.5	2.85	81.3	3.20	x		x		

Non standard material and color: See uni Material and Color Overview.

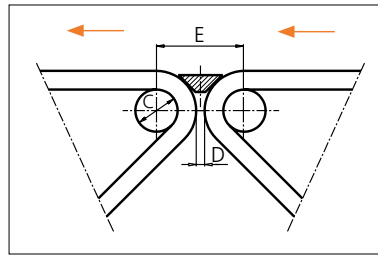
Molded sprocket



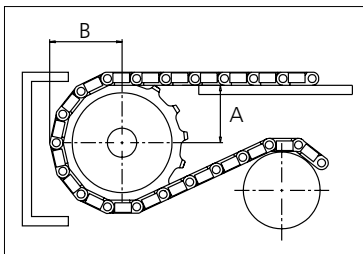
Molded sprocket



Nosebars Min. Dimensions



	mm	in
C	20.0	0.79
D	4.0	0.16
E	41.6	1.64



Other sprocket sizes are available upon request.
Two-part sprocket are available upon request.
Round bores are always delivered with keyway.
Other bore sizes are available upon request.
uni Retainer Rings: See uni Retainer Ring data sheet.
Width of tooth = 7.0 mm (0.28 in)
Width of sprocket = 20.0 mm (0.79 in)
Max load per sprocket shown does not take bore size into account.
Please also ensure that sufficient size shaft is chosen for corresponding load.

For correct sprocket position: See uni Assembly Instructions for uni M-SNB.
For more detailed sprocket information, contact Customer Service.

Any questions? Please contact us.

Morskate Aandrijvingen BV

Oosterveldsingel 47A
7558 PJ Hengelo (Ov)
The Netherlands

NL

T +31 (0)74 - 760 11 11
info@morskateaanrijvingen.nl
www.morskateaanrijvingen.nl

DE

T +49 692 - 222 34 95
info@morskateantriebstechnik.de
www.morskateantriebstechnik.de

EN

T +31 (0)74 - 760 11 11
info@morskatedrivetechnology.com
www.morskatedrivetechnology.com