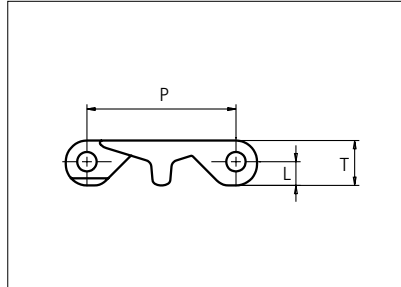


Plastic Modular Belt

Series **uni X-MPB** Type **C**



Straight running belt
 Nominal pitch: 63.5 mm (2.50 in)
 Surface type: Flat
 Surface opening: Closed
 Backflex radius: 75 mm (2.95 in)
 Pin diameter: ø8 mm (0.31 in)

STANDARD

| | | | | | | | | |
|-----------------------|-------------------------------|----------------|--------------------|------|------|----------|------|------|
| Belt material & color | POM-DI W | PE-I N | mm | in | mm | in | | |
| | Pin and lock material & color | | P (Nominal) | 63.5 | 2.50 | T | 19.1 | 0.75 |
| | | PA6.6 N | L | 10.1 | 0.40 | - | - | - |

Non standard material and color: See uni Material and Color Overview.

Alternative pin and lock materials: Lockpin: PP **W** PBT **LG**

| Belt width | | Permissible tensile force (Belt/pin material) | | | | Belt weight (Belt/pin material) | | | | *Min. No. drive sprocket per shaft | Number of wear strips (Min. No.) | |
|------------|------|---|------|------------|------|---------------------------------|-------|------------|-------|------------------------------------|----------------------------------|----------------|
| | | POM-DI/PA6.6 | | PE-I/PA6.6 | | POM-DI/PA6.6 | | PE-I/PA6.6 | | | **Carry (pcs) | **Return (pcs) |
| mm | in | N | lbf | N | lbf | kg/m | lb/ft | kg/m | lb/ft | | | |
| 76 | 3.0 | 2280 | 513 | 760 | 171 | 1.1 | 0.75 | 0.8 | 0.51 | 2 | 2 | 2 |
| 151 | 6.0 | 4545 | 1022 | 1515 | 341 | 2.2 | 1.49 | 1.5 | 1.02 | 2 | 2 | 2 |
| 227 | 8.9 | 6809 | 1531 | 2270 | 510 | 3.3 | 2.23 | 2.3 | 1.53 | 2 | 2 | 2 |
| 302 | 11.9 | 9074 | 2040 | 3025 | 680 | 4.4 | 2.97 | 3.0 | 2.03 | 3 | 3 | 2 |
| 378 | 14.9 | 11339 | 2549 | 3780 | 850 | 5.5 | 3.71 | 3.8 | 2.54 | 3 | 3 | 2 |
| 453 | 17.9 | 13603 | 3058 | 4534 | 1019 | 6.6 | 4.45 | 4.5 | 3.05 | 4 | 4 | 2 |
| 529 | 20.8 | 15868 | 3567 | 5289 | 1189 | 7.7 | 5.19 | 5.3 | 3.55 | 4 | 4 | 2 |
| 604 | 23.8 | 18133 | 4076 | 6044 | 1359 | 8.8 | 5.93 | 6.0 | 4.06 | 5 | 5 | 3 |
| 680 | 26.8 | 20397 | 4585 | 6799 | 1528 | 9.9 | 6.67 | 6.8 | 4.57 | 5 | 5 | 3 |
| 755 | 29.7 | 22662 | 5094 | 7554 | 1698 | 11.0 | 7.41 | 7.6 | 5.08 | 6 | 6 | 3 |
| 831 | 32.7 | 24927 | 5604 | 8309 | 1868 | 12.1 | 8.15 | 8.3 | 5.58 | 6 | 6 | 3 |
| 906 | 35.7 | 27191 | 6113 | 9064 | 2038 | 13.2 | 8.89 | 9.1 | 6.09 | 7 | 7 | 4 |
| 982 | 38.7 | 29456 | 6622 | 9819 | 2207 | 14.3 | 9.63 | 9.8 | 6.60 | 7 | 7 | 4 |

Additional standard belt widths are available in steps of 75.5 mm (2.97 in.) Additional non-standard belt widths are available in steps of 25.2 mm (0.99 in.)

| | | | | | | | | | | | | |
|------|------|-------|-------|-------|------|------|-------|------|-------|----|----|---|
| 1963 | 77.3 | 58890 | 13238 | 19630 | 4413 | 28.7 | 19.26 | 19.6 | 13.19 | 14 | 14 | 7 |
|------|------|-------|-------|-------|------|------|-------|------|-------|----|----|---|

Additional standard belt widths are available in steps of 75.5 mm (2.97 in.) Additional non-standard belt widths are available in steps of 25.2 mm (0.99 in.)

| | | | | | | | | | | | | |
|------|-------|-------|-------|-------|------|------|-------|------|-------|----|----|----|
| 2945 | 115.9 | 88350 | 19861 | 29450 | 6620 | 43.0 | 28.90 | 29.5 | 19.79 | 20 | 20 | 10 |
|------|-------|-------|-------|-------|------|------|-------|------|-------|----|----|----|

General belt tolerance is +0/-0.4% at 23°C/73°F and 50% RH. For exact belt width contact Customer Service. Non standard belt width on request.

*Max. Load per Drive Sprocket. Belt material: POM-DI 4000 N (899 lbf), PE-I 3000 N (674 lbf)

**Max. Spacing between wear strips, Carry: 152 mm (6 in.); Return: 304 mm (12 in.)

= Single Link

STRAIGHT RUNNING

PITCH 63.5 MM/2.50 IN

Any questions? Please contact us.

Morskate Aandrijvingen BV
 Oosterveldsingel 47A
 7558 PJ Hengelo (Ov)
 The Netherlands

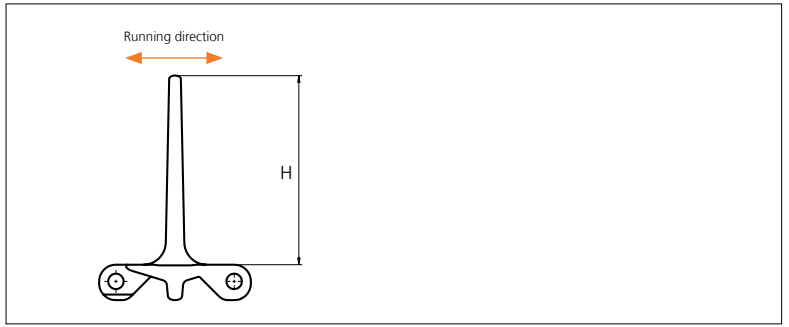
NL
 T +31 (0)74 - 760 11 11
 info@morskateaandrijvingen.nl
 www.morskateaandrijvingen.nl

DE
 T +49 692 - 222 34 95
 info@morskateantriebstechnik.de
 www.morskateantriebstechnik.de

EN
 T +31 (0)74 - 760 11 11
 info@morskatedrivetechnology.com
 www.morskatedrivetechnology.com

Accessories

Flight



| Type | Material & color | H | | Link size | Width | | Indent | |
|------|------------------|-------|------|-----------|-------|------|--------|------|
| | | mm | in | | mm | in | mm | in |
| Flat | POM-DI W | 101.6 | 4.00 | K600 | 151.0 | 5.94 | 0.0 | 0.00 |

Non Standard material and color: See uni Material and Color Overview.

Sprocket

| No of teeth | Pilot Bore | Bore size | | | | | | | | | | | | Overall diameter | | Pitch-diameter | | Hub-diameter | | A-dimension | | B-dimension | | Single row/Two way | Double row/Two way | Molded PA6 LG | Machined PA6 N |
|-------------|------------|-----------|------|------|------|------|------|------|------|------|------|------|-------|------------------|-------|----------------|-------|--------------|-------|-------------|-------|-------------|--|--------------------|--------------------|---------------|----------------|
| | | in | 0.75 | 0.78 | 0.98 | 1.00 | 1.18 | 1.25 | 1.50 | 1.57 | 2.36 | 2.50 | 3.54 | | | | | | | | | | | | | | |
| | | mm | 19.1 | 20.0 | 25.0 | 25.4 | 30.0 | 31.8 | 38.1 | 40.0 | 60.0 | 63.5 | 90.0 | mm | in | mm | in | mm | in | mm | in | | | | | | |
| Z06 | x | | | | | ● | ● | ● | ● | | | | 124.2 | 4.89 | 126.0 | 4.96 | 70.0 | 2.76 | 44.9 | 1.77 | 72.5 | 2.85 | | x | x | | |
| Z08 | x | | | | | | | ● | ● | ● | ● | | 165.6 | 6.52 | 164.6 | 6.48 | 70.0 | 2.76 | 66.6 | 2.62 | 92.0 | 3.62 | | x | x | | |
| Z10 | x | | | | | | | ● | ● | ● | ● | | 206.6 | 8.13 | 203.9 | 8.03 | 70.0 | 2.76 | 87.6 | 3.45 | 111.7 | 4.40 | | x | x | | |
| Z13 | x | | | | | | | ● | ● | ● | ● | ■ | 267.8 | 10.54 | 265.3 | 10.44 | 150.0 | 5.91 | 118.7 | 4.67 | 141.7 | 5.58 | | x | | x | |

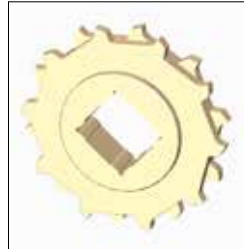
■ Molded sprocket



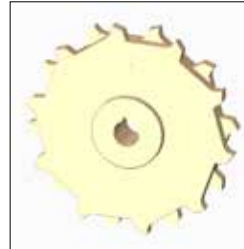
● Machined sprocket



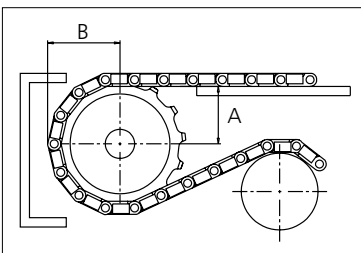
■ Molded sprocket



● Machined sprocket



Non standard material and color: See uni Material and Color Overview.



Other sprocket sizes are available upon request.

Two-part sprocket are available upon request.

Round bores are always delivered with keyway.

Other bore sizes are available upon request.

uni Retainer Rings: See uni Retainer Ring data sheet.

Width of tooth = 12.0 mm (0.47 in)

Width of sprocket = 43.3 mm (1.67 in)

Max load per sprocket shown does not take bore size into account.

Please also ensure that sufficient size shaft is chosen for corresponding load.

For correct sprocket position: See uni Assembly Instructions for uni X-MPB.

For more detailed sprocket information, contact Customer Service.

Any questions? Please contact us.

Morskate Aandrijvingen BV

Oosterveldsingel 47A
7558 PJ Hengelo (Ov)
The Netherlands

NL
T +31 (0)74 - 760 11 11
info@morskateaanrijvingen.nl
www.morskateaanrijvingen.nl

DE
T +49 692 - 222 34 95
info@morskateantriebstechnik.de
www.morskateantriebstechnik.de

EN
T +31 (0)74 - 760 11 11
info@morskatedrivetechnology.com
www.morskatedrivetechnology.com