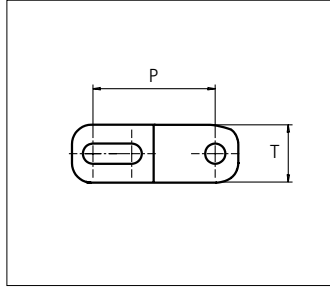
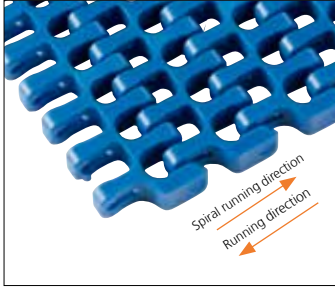


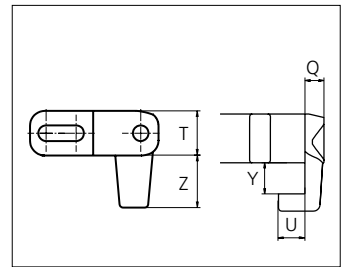
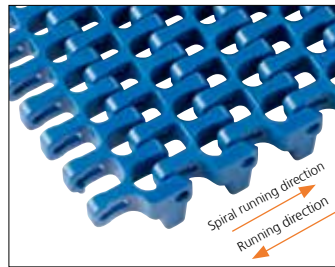
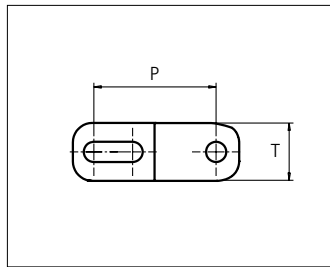
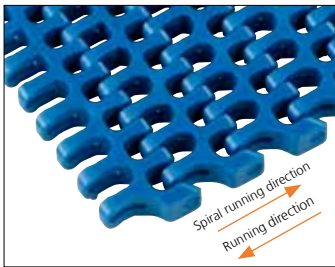
## Plastic Modular Belt

### Series uni Flex ASB



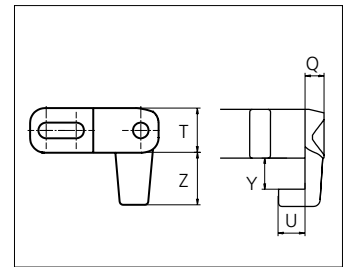
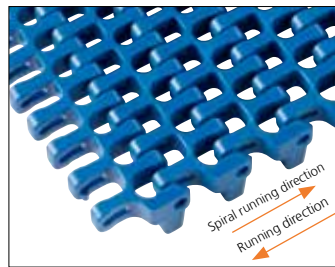
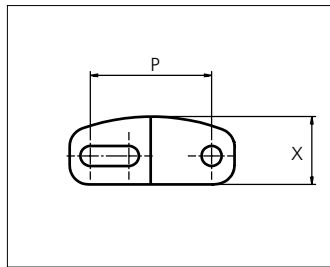
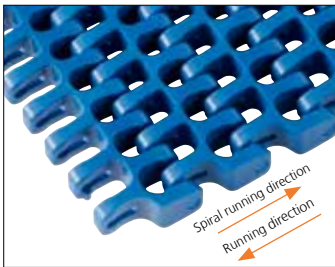
Sideflexing belt  
 Nominal pitch: 25.4 mm (1.00 in)  
 Surface type: Flat  
 Surface opening: 43%  
 Backflex radius: 25.0 mm (0.98 in)  
 Pin diameter:  $\varnothing$ 4.0 mm (0.16 in)  
 Min. inside radius: R1.6 x belt width, R2.2 x belt width  
 Curved surface makes perfect circle when Z9 tooth sprocket or 95 mm (3.74 in) flex diameter is applied.

**uni Flex ASB R1.6**  
 Surface Opening: 43%



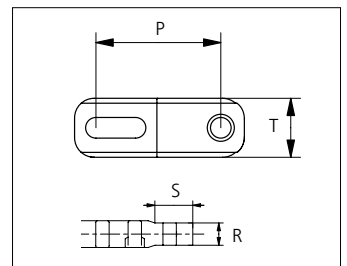
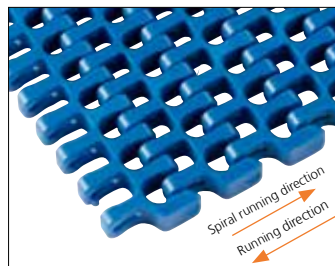
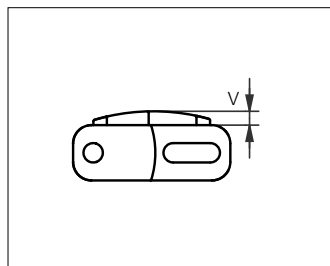
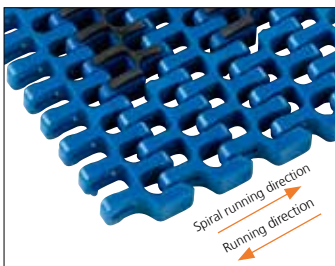
**uni Flex ASB R2.2**  
 Surface Opening: 43%

**uni Flex ASB Tab R2.2**  
 Surface Opening: 43%



**uni Flex ASB CS R2.2**  
 Surface Opening: 43%

**uni Flex ASB CS Tab R2.2**  
 Surface Opening: 43%




**uni Flex ASB Rubber Top R2.2**  
 Surface Opening: 43%

**uni Flex ASB Edge R2.2**  
 Surface Opening: 43%


Min. indent for Rubber Top inside and outside in the belt is 44.0 mm (1.73 in).

	mm	in		mm	in		mm	in		mm	in
<b>P (Nominal)</b>	25.4	1.00	<b>S</b>	16.0	0.63	<b>V</b>	3.0	0.12	<b>Z</b>	14.0	0.55
<b>Q</b>	5.5	0.22	<b>T</b>	12.0	0.47	<b>X</b>	14.2	0.56	-	-	-
<b>R</b>	10.0	0.39	<b>U</b>	7.5	0.30	<b>Y</b>	9.0	0.35	-	-	-

Type	Belt materials and colors	Standars pin materials and colors
uni Flex ASB R1.6	POM-D <b>B</b>	 PA6.6 <b>B</b>
uni Flex ASB R2.2	POM-D <b>B</b> <b>W</b> <b>G</b>	
	PP <b>B</b> <b>W</b>	
uni Flex ASB Tab R2.2	POM-D <b>B</b> <b>W</b>	
	PP <b>B</b> <b>W</b>	
uni Flex ASB CS R2.2	POM-D <b>B</b> <b>W</b>	
uni Flex ASB CS Tab R2.2	POM-D <b>B</b> <b>W</b>	
uni Flex ASB R2.2 Rubber Top	PP <b>B</b> + 03 <b>K</b>	
	PP <b>W</b> + 03 <b>N</b>	
uni Flex ASB Edge R2.2	POM-D <b>B</b>	
	PP <b>B</b>	

Non standard material and color: See uni Material and Color Overview.

Alternative pin and lock materials:

 Snap Pin A1: PP **W** PBT **LG** PA6.6 **B**


Belt width		Permissible tensile force (Belt/pin material)								Belt weight (Belt/pin material)				*Min. No. drive sprocket per shaft	Number of wear strips (Min. No.)	
		POM-D/PA6.6				PP/PA6.6				POM-D/PA6.6		PP/PA6.6			**Carry (pcs)	**Return (pcs)
		Straight sections		Curve sections		Straight sections		Curve sections		kg/m	lb/ft	kg/m	lb/ft			
mm	in	N	lbf	N	lbf	N	lbf	N	lbf	kg/m	lb/ft	kg/m	lb/ft			
148	5.8	2782	625	1200	270	1850	416	720	162	1.2	0.82	0.8	0.52	2	2	2
224	8.8	4211	947	1200	270	2800	629	720	162	1.8	1.23	1.2	0.78	2	2	2
301	11.9	5659	1272	1200	270	3763	846	720	162	2.5	1.66	1.6	1.05	3	3	2
378	14.9	7098	1596	1600	360	4719	1061	960	216	3.1	2.08	2.0	1.32	3	3	2
454	17.9	8536	1919	1600	360	5676	1276	960	216	3.7	2.50	2.4	1.59	5	4	2
531	20.9	9975	2242	2040	459	6632	1491	1224	275	4.4	2.92	2.8	1.85	5	4	2
607	23.9	11414	2566	2040	459	7589	1706	1224	275	5.0	3.35	3.2	2.12	5	5	3
684	26.9	12853	2889	2040	459	8546	1921	1224	275	5.6	3.77	3.6	2.39	5	5	3
760	29.9	14291	3213	2040	459	9502	2136	1224	275	6.2	4.19	4.0	2.66	7	6	3
837	32.9	15730	3536	2040	459	10459	2351	1224	275	6.9	4.61	4.4	2.92	7	6	3
913	36.0	17169	3860	2040	459	11416	2566	1224	275	7.5	5.03	4.7	3.19	7	7	4
990	39.0	18608	4183	2040	459	12372	2781	1224	275	8.1	5.45	5.1	3.46	7	7	4
Additional standard belt widths are available in steps of 76.5 mm (3.01 in) Additional non-standard belt widths are available in steps of 12.7 mm (0.50 in)																
1449	57.0	27241	6124	2040	459	18113	4072	1224	275	11.9	7.99	7.5	5.06	11	10	5
Additional standard belt widths are available in steps of 76.5 mm (3.01 in) Additional non-standard belt widths are available in steps of 12.7 mm (0.50 in)																
1985	78.1	37318	8389	2040	459	24813	5578	1224	275	16.3	10.94	10.3	6.94	15	14	7

General belt tolerance is +0/-0.4% at 23°C/73°F. For exact belt width contact Customer Service. Non standard belt width on request.

Minimum Belt Width Flex ASB R1.6: 301 mm (11.9 in).

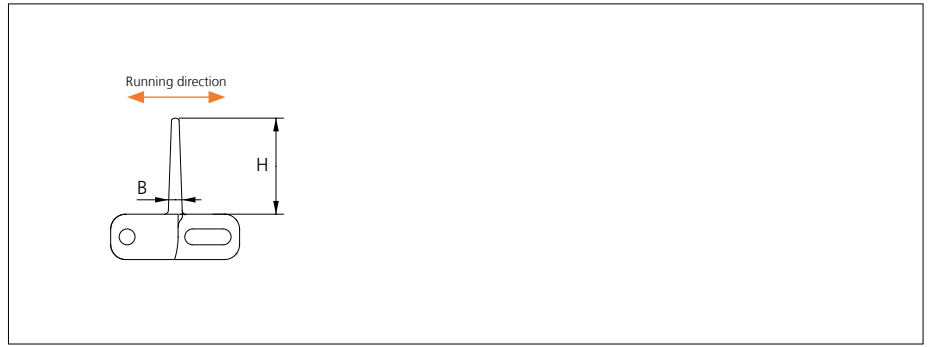
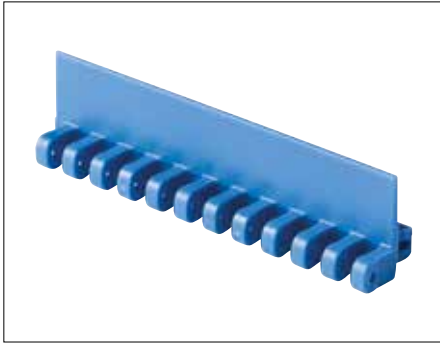
\*Max. Load per Drive Sprocket. Belt material: POM-D 2000 N (450 lbf), PP 1100 N (247 lbf).

\*\*Max. Spacing between wear strips, Carry: 152 mm (6 in); Return: 304 mm (12 in).

 = Single Link

## Accessories

### Flight

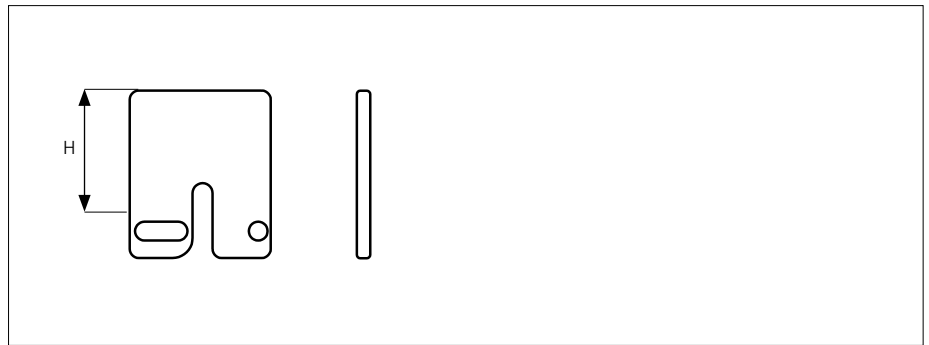
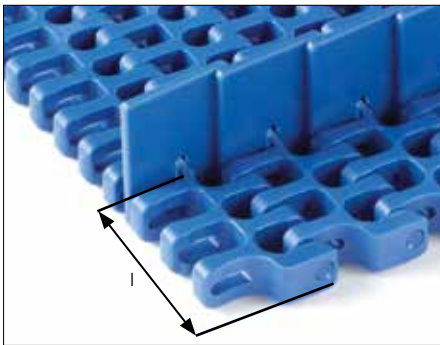


Type	Flight Material & color	B		H		Link size	Width		I (min)	
		mm	in	mm	in		mm	in	mm	in
Flat	POM-D <b>B</b> <b>W</b>	3.7	0.15	25.4	1.00	K600	151.0	5.94	38.1	1.50

Non Standard material and color: See uni Material and Color Overview.

## Accessories

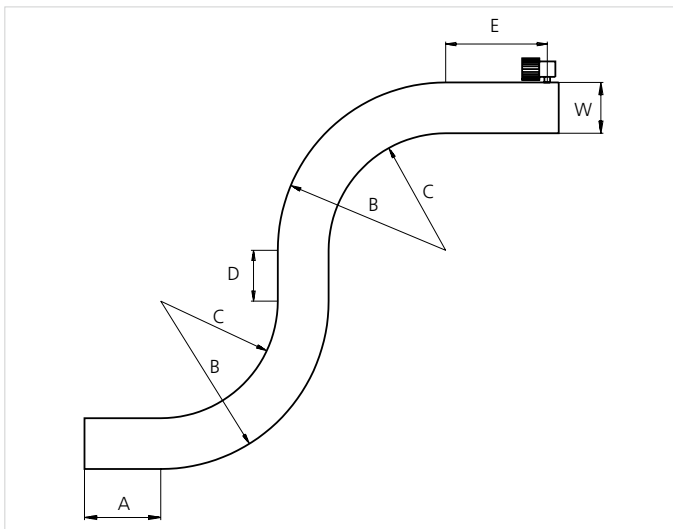
### Side Guard



Type	Side Guard Material & color	H		I (min)	
		mm	in	mm	in
Flat	POM-D <b>B</b> <b>W</b>	25.4	1.00	44.0	1.73

Note: Side Guard can be placed in multiples of 25.4 mm (1.00 in)  
 Non Standard material and color: See uni Material and Color Overview.

## Design Guidelines

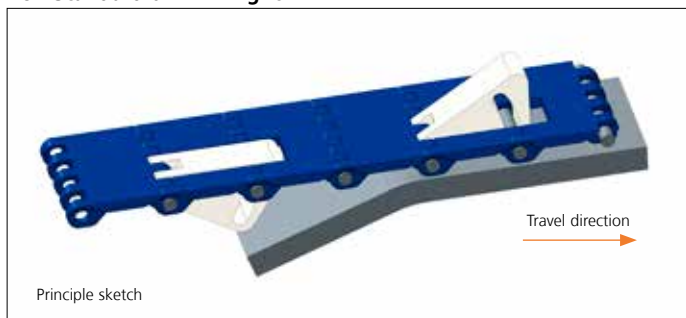


	uni Flex ASB R2.2 uni Flex ASB Tab R2.2 uni Flex ASB CS R2.2 uni Flex ASB CS Tab R2.2	uni Flex ASB R1.6
<b>A</b>	min. 1.5 x W	min. 1.5 x W
<b>B</b>	min 3.2 x W	min. 2.6 x W
<b>C</b>	min 2.2 x W	min. 1.6 x W
<b>D</b>	min 2 x W	
<b>E</b>	min 2 x W, min.	
<b>W</b>	Belt width	

uni Flex ASB 1.6 can not be used in conveyors with both left and right turning curves.  
 All curves have to turn in the same direction.  
 For min. conveyor dimensions please refer to sketch and diagram.

## Accessories

### Non Standard uni AmFlight



Other Non Standard option: See uni AmFlight Overview.

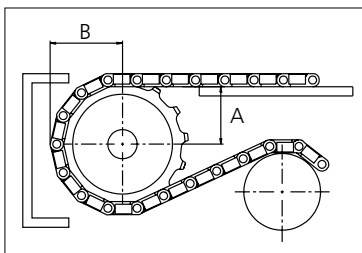
## Sprocket

No of teeth	Bore size												Overall diameter		Pitch-diameter		Hub-diameter		A-dimension		B-dimension		Single row/Two way	Double row/Two way	Molded	Machined
	Pilot Bore	in	0.75	0.79	0.98	1.00	1.18	1.25	1.50	1.57	2.36	2.50														
	mm	19.1	20.0	25.0	25.4	30.0	31.8	38.1	40.0	60.0	63.5	90.0	mm	in	mm	in	mm	in	mm	in						
Z07	x		●	●	●	●							58.0	2.28	58.5	2.30	40.8	1.61	20.4	0.80	35.2	1.39	x	x		
Z09	x			●	●	●	●						75.0	2.95	74.3	2.93	57.8	2.28	28.9	1.14	43.1	1.70	x	x		
Z12	x			●	●	●	●	■					100.0	3.94	98.1	3.86	82.8	3.26	41.4	1.63	55.1	2.17	x	x		
Z15	x				●	●	●	■	■	■			124.6	4.91	122.2	4.81	107.4	4.23	53.8	2.12	67.1	2.64	x	x		
Z18	x					●	●	■	■	■			149.3	5.88	146.3	5.76	132.1	5.20	66.0	2.60	79.2	3.12	x	x		

### ■ Machined sprocket



### ● Machined sprocket



Non standard material and color: See uni Material and Color Overview.

Other sprocket sizes are available upon request

Two-part sprocket are available upon request

Other bore sizes are available upon request

uni Retainer Rings: See uni Retainer Ring data sheet

Width of tooth = 7.0 mm (0.28 in)

Width of sprocket = 30.0 mm (1.18 in)

Max load per sprocket shown does not take bore size into account.

Please also ensure that sufficient size shaft is chosen for corresponding load.

For correct sprocket position: See uni Assembly Instructions for uni Flex ASB.

For more detailed sprocket information, contact Customer Service.

Any questions? Please contact us.

### Morskate Aandrijvingen BV

Oosterveldsingel 47A  
7558 PJ Hengelo (Ov)  
The Netherlands

### NL

T +31 (0)74 - 760 11 11  
info@morskateaandrijvingen.nl  
www.morskateaandrijvingen.nl

### DE

T +49 692 - 222 34 95  
info@morskateantriebstechnik.de  
www.morskateantriebstechnik.de

### EN

T +31 (0)74 - 760 11 11  
info@morskatedrivetechnology.com  
www.morskatedrivetechnology.com