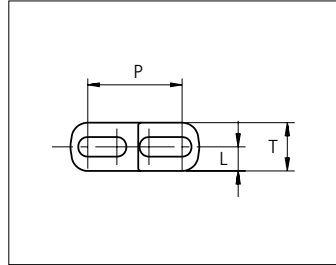
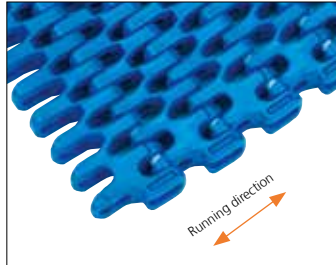


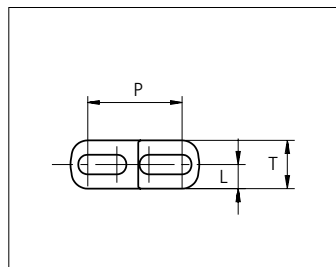
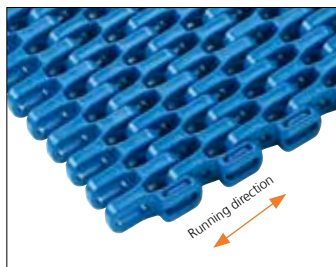
Plastic Modular Belt

Series **uni Flex SNB**

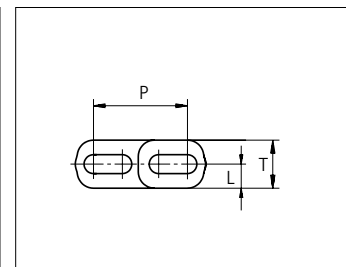
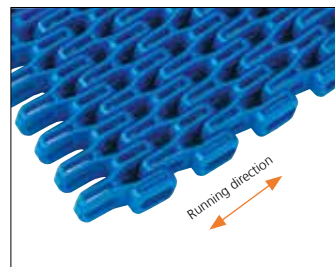


Sideflexing belt
 Nominal pitch: 25.4 mm (1.00 in)
 Surface type: Flat
 Surface opening: 47%/55%
 Backflex radius: 25.0 mm (0.98 in)
 Pin diameter: \varnothing 5.0 mm (0.20 in)
 Min. inside radius: R1.6 x belt width, R2.3 x belt width

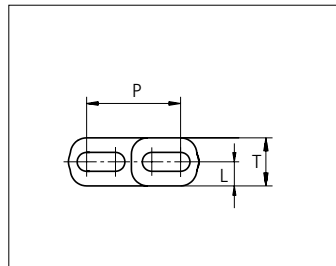
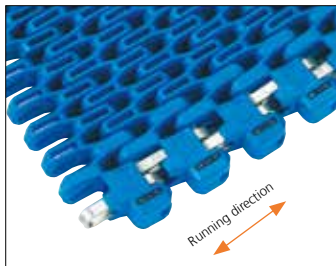
uni Flex SNB CR R1.6
 Surface Opening: 47%



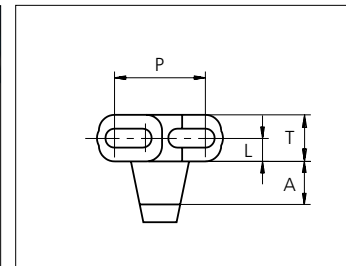
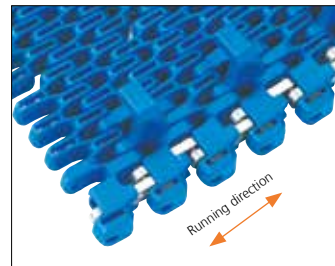
uni Flex SNB C R2.3
 Surface Opening: 47%



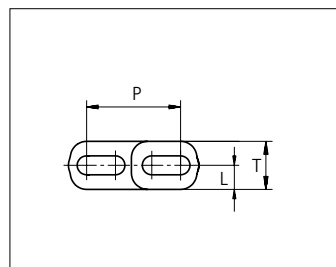
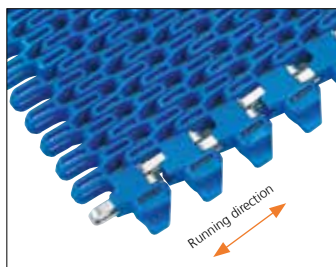
uni Flex SNB L R2.3
 Surface Opening: 55%



uni Flex SNB W R2.3
 Surface Opening: 55%



uni Flex SNB WT R2.3
 Surface Opening: 55%



uni Flex SNB WO R2.3
 Surface Opening: 55%

	mm	in		mm	in
P (Nominal)	25.4	1.00	L	6.5	0.26
A	12.0	0.47	T	13.0	0.51

STANDARD

SIDE FLEXING

PITCH 25.4 MM/1.00 IN

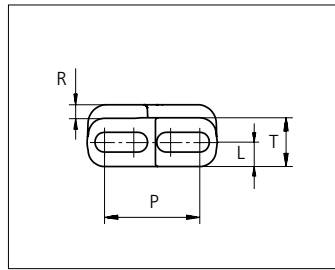
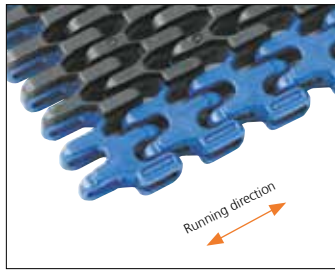
Any questions? Please contact us.

Morskate Aandrijvingen BV
 Oosterveldsingel 47A
 7558 PJ Hengelo (Ov)
 The Netherlands

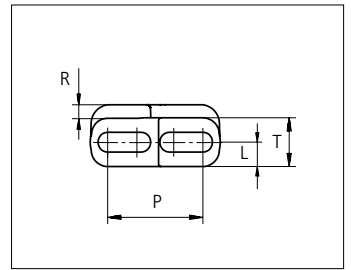
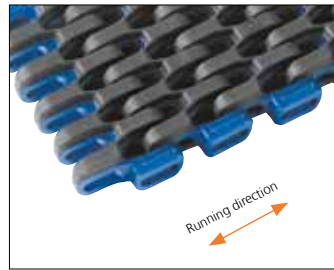
NL
 T +31 (0)74 - 760 11 11
 info@morskateaandrijvingen.nl
 www.morskateaandrijvingen.nl

DE
 T +49 692 - 222 34 95
 info@morskateantriebstechnik.de
 www.morskateantriebstechnik.de

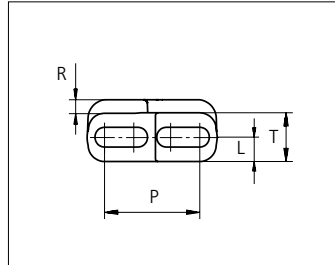
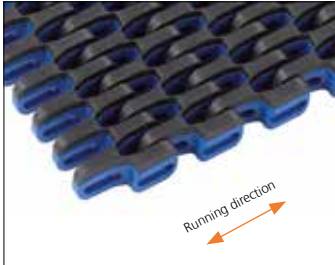
EN
 T +31 (0)74 - 760 11 11
 info@morskatedrivetechnology.com
 www.morskatedrivetechnology.com



uni Flex SNB CR Rubber Top R1.6
Surface Opening: 47%



uni Flex SNB CI Rubber Top R2.3
Surface Opening: 47%



uni Flex SNB C Rubber Top R2.3
Surface Opening: 47%

	mm	in		mm	in
P (Nominal)	25.4	1.00	R	3.0	0.12
L	6.5	0.26	T	13.0	0.51

Indent uni Flex SNB CR Rubber Top R1.6 is 26.5 mm (1.04 in). uni Flex SNB CI Rubber Top R2.3 is 7.0 mm (0.28 in). uni Flex SNB C Rubber Top R2.3 is available without indent.

Type	Belt materials and colors	Pin materials and colors
uni Flex SNB CR R1.6 uni Flex SNB C R2.3 uni Flex SNB L R2.3*	POM-D B W PP B W PA6.6 B W	PBT LG
uni Flex SNB C R2.3	POM-D B W	SS304
uni Flex SNB W	PP B W	
uni Flex SNB WO	PA6.6 B W	
uni Flex SNB WT	PA6.6 B W	SS304 PBT LG
uni Flex SNB CR Rubber Top R1.6 uni Flex SNB CI Rubber Top R2.3 uni Flex SNB CI Rubber Top R2.3	PP B W + 03 K PP B W + 03 N	PBT LG

Standard materials and colors

Lockingplates PP **W B**

Wearpart and O-Tab PA6.6 **W B**

For high speed or load abrasive applications:

Wearpart and O-Tab POM-DK **N**

Non standard material and color: See uni Material and Color Overview.

Alternative pin materials: PA6.6 **B N**

Any questions? Please contact us.

uni Flex SNB CR R1.6

Belt width		Permissible tensile force (Belt/pin material)												Belt weight (Belt/pin material)						*Min No. drive sprocket per shaft	Number of wear strips (Min. No.)	
		POM-D/PA6.6				PP/PA6.6				PA6.6/PBT				POM-D /PBT		PP/PBT		PA6.6/PBT			**Carry (pcs)	**Return (pcs)
		Straight sections		Curve sections		Straight sections		Curve sections		Straight sections		Curve sections										
mm	in	N	lbf	N	lbf	N	lbf	N	lbf	N	lbf	N	lbf	kg/m	lb/ft	kg/m	lb/ft	kg/m	lb/ft			
76	3.0	2280	513	600	135	1140	256	600	135	2280	513	600	135	0.6	0.39	0.4	0.28	0.5	0.33	2	2	2
152	6.0	4561	1025	600	135	2281	513	600	135	4561	1025	600	135	1.2	0.79	0.8	0.55	1.0	0.65	2	2	2
228	9.0	6842	1538	600	135	3421	769	600	135	6842	1538	600	135	1.8	1.18	1.2	0.83	1.5	0.98	2	2	2
304	12.0	9124	2051	600	135	4562	1025	600	135	9124	2051	600	135	2.3	1.57	1.6	1.10	1.9	1.31	3	3	2
380	15.0	11405	2564	600	135	5702	1282	600	135	11405	2564	600	135	2.9	1.97	2.1	1.38	2.4	1.64	3	3	2
456	18.0	13686	3077	600	135	6843	1538	600	135	13686	3077	600	135	3.5	2.36	2.5	1.66	2.9	1.96	5	4	2
532	21.0	15967	3589	600	135	7984	1795	600	135	15967	3589	600	135	4.1	2.75	2.9	1.93	3.4	2.29	5	4	2
608	23.9	18248	4102	600	135	9124	2051	600	135	18248	4102	600	135	4.7	3.15	3.3	2.21	3.9	2.62	5	5	3
684	26.9	20530	4615	600	135	10265	2308	600	135	20530	4615	600	135	5.3	3.54	3.7	2.48	4.4	2.94	5	5	3
760	29.9	22811	5128	600	135	11405	2564	600	135	22811	5128	600	135	5.9	3.93	4.1	2.76	4.9	3.27	7	6	3
836	32.9	25092	5641	600	135	12546	2820	600	135	25092	5641	600	135	6.4	4.33	4.5	3.04	5.4	3.60	7	6	3
912	35.9	27373	6153	600	135	13687	3077	600	135	27373	6153	600	135	7.0	4.72	4.9	3.31	5.8	3.92	7	7	4
988	38.9	29654	6666	600	135	14827	3333	600	135	29654	6666	600	135	7.6	5.12	5.3	3.59	6.3	4.25	7	7	4

Additional standard belt widths are available in steps of 76.0 mm (2.99 in) Additional non-standard belt widths are available in steps of 12.7 mm (0.50 in)

1597	62.9	47910	10770	600	135	23955	5385	600	135	47910	10770	600	135	12.3	8.26	8.6	5.80	10.2	6.87	11	11	6
------	------	-------	-------	-----	-----	-------	------	-----	-----	-------	-------	-----	-----	------	------	-----	------	------	------	----	----	---

Additional standard belt widths are available in steps of 76.0 mm (2.99 in) Additional non-standard belt widths are available in steps of 12.7 mm (0.50 in)

1977	77.8	59310	13333	600	135	29655	6666	600	135	59310	13333	600	135	15.2	10.23	10.7	7.17	12.7	8.50	15	14	7
------	------	-------	-------	-----	-----	-------	------	-----	-----	-------	-------	-----	-----	------	-------	------	------	------	------	----	----	---

General belt tolerance is +0/-0.4% at 23°C/73°F. For exact belt width contact Customer Service. Non standard belt width on request.

Flex SNB-CR locked with wearpart or O-tabs both sides are 6 mm wider than the dimensions in the table above.

*Max. Load per Drive Sprocket. Belt material: POM-D 1000 N (225 lbf), PP 850 N (191 lbf), PA6.6 1000 N (225 lbf)

**Max. Spacing between wear strips, Carry: 152 mm (6 in); Return: 304 mm (12 in)

uni Flex SNB C R2.3 / uni Flex SNB L R2.3

Belt width		Permissible tensile force (Belt/pin material)												Belt weight (Belt/pin material)						*Min No. drive sprocket per shaft	Number of wear strips (Min. No.)	
		POM-D/PBT				PP/PBT				PA6.6/PBT				PP/PBT		PA6.6/PBT		**Carry (pcs)	**Return (pcs)			
		Straight sections		Curve sections		Straight sections		Curve sections		Straight sections		Curve sections										
mm	in	N	lbf	N	lbf	N	lbf	N	lbf	N	lbf	N	lbf	kg/m	lb/ft	kg/m	lb/ft	kg/m	lb/ft			
76	3.0	2280	513	1000	225	1140	256	600	135	2280	513	1000	225	0.5	0.35	0.4	0.25	0.4	0.30	2	2	2
152	6.0	4561	1025	1000	225	2281	513	600	135	4561	1025	1000	225	1.0	0.71	0.7	0.49	0.9	0.59	2	2	2
228	9.0	6842	1538	1000	225	3421	769	600	135	6842	1538	1000	225	1.6	1.06	1.1	0.74	1.3	0.89	2	2	2
304	12.0	9124	2051	1000	225	4562	1025	600	135	9124	2051	1000	225	2.1	1.41	1.5	0.98	1.8	1.19	3	3	2
380	15.0	11405	2564	1000	225	5702	1282	600	135	11405	2564	1000	225	2.6	1.76	1.8	1.23	2.2	1.48	3	3	2
456	18.0	13686	3077	1000	225	6843	1538	600	135	13686	3077	1000	225	3.1	2.12	2.2	1.47	2.6	1.78	5	4	2
532	21.0	15967	3589	1000	225	7984	1795	600	135	15967	3589	1000	225	3.7	2.47	2.6	1.72	3.1	2.07	5	4	2
608	23.9	18248	4102	1000	225	9124	2051	600	135	18248	4102	1000	225	4.2	2.82	2.9	1.96	3.5	2.37	5	5	3
684	26.9	20530	4615	1000	225	10265	2308	600	135	20530	4615	1000	225	4.7	3.17	3.3	2.21	4.0	2.67	5	5	3
760	29.9	22811	5128	1000	225	11405	2564	600	135	22811	5128	1000	225	5.2	3.53	3.6	2.45	4.4	2.96	7	6	3
836	32.9	25092	5641	1000	225	12546	2820	600	135	25092	5641	1000	225	5.8	3.88	4.0	2.70	4.9	3.26	7	6	3
912	35.9	27373	6153	1000	225	13687	3077	600	135	27373	6153	1000	225	6.3	4.23	4.4	2.94	5.3	3.56	7	7	4
988	38.9	29654	6666	1000	225	14827	3333	600	135	29654	6666	1000	225	6.8	4.58	4.7	3.19	5.7	3.85	7	7	4

Additional standard belt widths are available in steps of 76.0 mm (2.99 in) Additional non-standard belt widths are available in steps of 12.7 mm (0.50 in)

1597	62.9	47910	10770	1000	225	23955	5385	600	135	47910	10770	1000	225	11.0	7.41	7.7	5.15	9.3	6.22	11	11	6
------	------	-------	-------	------	-----	-------	------	-----	-----	-------	-------	------	-----	------	------	-----	------	-----	------	----	----	---

Additional standard belt widths are available in steps of 76.0 mm (2.99 in) Additional non-standard belt widths are available in steps of 12.7 mm (0.50 in)

1977	77.8	59310	13333	1000	225	29655	6666	600	135	59310	13333	1000	225	13.6	9.17	9.5	6.38	11.5	7.71	15	14	7
------	------	-------	-------	------	-----	-------	------	-----	-----	-------	-------	------	-----	------	------	-----	------	------	------	----	----	---

General belt tolerance is +0/-0.4% at 23°C/73°F. For exact belt width contact Customer Service. Non standard belt width on request.

Flex SNB-L locked with wearpart or O-tabs both sides are 6 mm wider than the dimensions in the table above.

*Max. Load per Drive Sprocket. Belt material: POM-D 1000 N (225 lbf), PP 850 N (191 lbf), PA6.6 1000 N (225 lbf)

**Max. Spacing between wear strips, Carry: 152 mm (6 in); Return: 304 mm (12 in)

uni Flex SNB W R2.3 / uni Flex SNB WO R2.3

Belt width		Permissible tensile force (Belt/pin material)												Belt weight (Belt/pin material)						*Min No. drive sprocket per shaft	Number of wear strips (Min. No.)	
		POM-D/SS +Reinforcement links				POM-D/SS +Reinforcement links				POM-D/SS +Reinforcement links				SS+ Reinforcement links		SS+ Reinforcement links		SS+ Reinforcement links			**Carry (pcs)	**Return (pcs)
		Straight sections		Curve sections		Straight sections		Curve sections		Straight sections		Curve sections		kg/m	lb/ft	kg/m	lb/ft	kg/m	lb/ft			
mm	in	N	lbf	N	lbf	N	lbf	N	lbf	N	lbf	N	lbf	kg/m	lb/ft	kg/m	lb/ft	kg/m	lb/ft			
82	3.2	2460	553	3300	742	1230	277	3300	742	2460	553	3300	742	1.0	0.67	0.8	0.55	0.9	0.61	2	2	2
158	6.2	4741	1066	3300	742	2371	533	3300	742	4741	1066	3300	742	1.9	1.29	1.6	1.06	1.7	1.17	2	2	2
234	9.2	7022	1579	3300	742	3511	789	3300	742	7022	1579	3300	742	2.8	1.90	2.3	1.57	2.6	1.73	2	2	2
310	12.2	9304	2091	3300	742	4652	1046	3300	742	9304	2091	3300	742	3.8	2.52	3.1	2.08	3.4	2.29	3	3	2
386	15.2	11585	2604	3300	742	5792	1302	3300	742	11585	2604	3300	742	4.7	3.14	3.9	2.60	4.2	2.85	3	3	2
462	18.2	13866	3117	3300	742	6933	1559	3300	742	13866	3117	3300	742	5.6	3.76	4.6	3.11	5.1	3.42	5	4	2
538	21.2	16147	3630	3300	742	8074	1815	3300	742	16147	3630	3300	742	6.5	4.38	5.4	3.62	5.9	3.98	5	4	2
614	24.2	18428	4143	3300	742	9214	2071	3300	742	18428	4143	3300	742	7.4	5.00	6.1	4.13	6.8	4.54	5	5	3
690	27.2	20710	4656	3300	742	10355	2328	3300	742	20710	4656	3300	742	8.4	5.61	6.9	4.64	7.6	5.10	5	5	3
766	30.2	22991	5168	3300	742	11495	2584	3300	742	22991	5168	3300	742	9.3	6.23	7.7	5.15	8.4	5.67	7	6	3
842	33.2	25272	5681	3300	742	12636	2841	3300	742	25272	5681	3300	742	10.2	6.85	8.4	5.66	9.3	6.23	7	6	3
918	36.2	27553	6194	3300	742	13777	3097	3300	742	27553	6194	3300	742	11.1	7.47	9.2	6.17	10.1	6.79	7	7	4
994	39.2	29834	6707	3300	742	14917	3353	3300	742	29834	6707	3300	742	12.0	8.09	9.9	6.68	10.9	7.35	7	7	4
1603	63.1	48090	10811	3300	742	24045	5405	3300	742	48090	10811	3300	742	19.4	13.04	16.0	10.77	17.6	11.85	11	11	6
1983	78.1	59490	13373	3300	742	29745	6687	3300	742	59490	13373	3300	742	24.0	16.13	19.8	13.33	21.8	14.66	15	14	7

Additional standard belt widths are available in steps of 76.0 mm (2.99 in) Additional non-standard belt widths are available in steps of 12.7 mm (0.50 in)

Additional standard belt widths are available in steps of 76.0 mm (2.99 in) Additional non-standard belt widths are available in steps of 12.7 mm (0.50 in)

General belt tolerance is +0/-0.4% at 23°C/73°F. For exact belt width contact Customer Service. Non standard belt width on request.

Outer modules are always in PA6.6 on belts wider than 234 mm (9.21 in).

Belts up to 234 mm (9.21 in) in width is only available in PA6.6.

*Max. Load per Drive Sprocket. Belt material: POM-D 1000 N (225 lbf), PP 850 N (191 lbf), PA6.6 1000 N (225 lbf).

**Max. Spacing between wear strips, Carry: 152 mm (6 in); Return: 304 mm (12 in).

uni Flex SNB WT R2.3 – PBT pins

Belt width		Permissible tensile force (Belt/pin material)												Belt weight (Belt/pin material)						*Min No. drive sprocket per shaft	Number of wear strips (Min. No.)	
		POM-D/PBT				PP/PBT				PA6.6/PBT				POM-D/PBT		PP/PBT		PA6.6/PBT			**Carry (pcs)	**Return (pcs)
		Straight sections		Curve sections		Straight sections		Curve sections		Straight sections		Curve sections		kg/m	lb/ft	kg/m	lb/ft	kg/m	lb/ft			
mm	in	N	lbf	N	lbf	N	lbf	N	lbf	N	lbf	N	lbf	kg/m	lb/ft	kg/m	lb/ft	kg/m	lb/ft			
82	3.2	2460	553	1000	225	1230	277	1000	225	2460	553	1000	225	0.6	0.38	0.4	0.26	0.5	0.32	2	2	2
158	6.2	4741	1066	1000	225	2371	533	1000	225	4741	1066	1000	225	1.1	0.73	0.8	0.51	0.9	0.62	2	2	2
234	9.2	7022	1579	1000	225	3511	789	1000	225	7022	1579	1000	225	1.6	1.09	1.1	0.76	1.4	0.91	2	2	2
310	12.2	9304	2091	1000	225	4652	1046	1000	225	9304	2091	1000	225	2.1	1.44	1.5	1.00	1.8	1.21	3	3	2
386	15.2	11585	2604	1000	225	5792	1302	1000	225	11585	2604	1000	225	2.7	1.79	1.9	1.25	2.2	1.51	3	3	2
462	18.2	13866	3117	1000	225	6933	1559	1000	225	13866	3117	1000	225	3.2	2.14	2.2	1.49	2.7	1.80	5	4	2
538	21.2	16147	3630	1000	225	8074	1815	1000	225	16147	3630	1000	225	3.7	2.50	2.6	1.74	3.1	2.10	5	4	2
614	24.2	18428	4143	1000	225	9214	2071	1000	225	18428	4143	1000	225	4.2	2.85	2.9	1.98	3.6	2.39	5	5	3
690	27.2	20710	4656	1000	225	10355	2328	1000	225	20710	4656	1000	225	4.8	3.20	3.3	2.23	4.0	2.69	5	5	3
766	30.2	22991	5168	1000	225	11495	2584	1000	225	22991	5168	1000	225	5.3	3.55	3.7	2.47	4.4	2.99	7	6	3
842	33.2	25272	5681	1000	225	12636	2841	1000	225	25272	5681	1000	225	5.8	3.91	4.0	2.72	4.9	3.28	7	6	3
918	36.2	27553	6194	1000	225	13777	3097	1000	225	27553	6194	1000	225	6.3	4.26	4.4	2.96	5.3	3.58	7	7	4
994	39.2	29834	6707	1000	225	14917	3353	1000	225	29834	6707	1000	225	6.9	4.61	4.8	3.21	5.8	3.88	7	7	4
1603	63.1	48090	10811	1000	225	24045	5405	1000	225	48090	10811	1000	225	11.1	7.43	7.7	5.17	9.3	6.25	11	11	6
1983	78.1	59490	13373	1000	225	29745	6687	1000	225	59490	13373	1000	225	13.7	9.20	9.5	6.40	11.5	7.73	15	14	7

Additional standard belt widths are available in steps of 76.0 mm (2.99 in) Additional non-standard belt widths are available in steps of 12.7 mm (0.50 in).

Additional standard belt widths are available in steps of 76.0 mm (2.99 in) Additional non-standard belt widths are available in steps of 12.7 mm (0.50 in).

General belt tolerance is +0/-0.4% at 23°C/73°F. For exact belt width contact Customer Service. Non standard belt width on request.

Outer modules are always in PA6.6 on belts wider than 234 mm (9.21 in).

Belts up to 234 mm (9.21 in) in width is only available in PA6.6.

*Max. Load per Drive Sprocket. Belt material: POM-D 1000 N (225 lbf), PP 850 N (191 lbf), PA6.6 1000 N (225 lbf).

**Max. Spacing between wear strips, Carry: 152 mm (6 in); Return: 304 mm (12 in).

uni Flex SNB WT R2.3 – SS pins

Belt width		Permissible tensile force (Belt/pin material)												Belt weight (Belt/pin material)						*Min No. drive sprocket per shaft	Number of wear strips (Min. No.)	
		POM-D/SS +Reinforcement links				PP/SS +Reinforcement links				PA6.6/SS +Reinforcement links				SS+ Rein- forcement links		SS+ Rein- forcement links		SS+ Rein- forcement links			**Carry (pcs)	**Return (pcs)
		Straight sections		Curve sections		Straight sections		Curve sections		Straight sections		Curve sections		kg/m	lb/ft	kg/m	lb/ft	kg/m	lb/ft			
mm	in	N	lbf	N	lbf	N	lbf	N	lbf	N	lbf	N	lbf	kg/m	lb/ft	kg/m	lb/ft	kg/m	lb/ft			
82	3.2	2460	553	3300	742	1230	277	3300	742	2460	553	3300	742	1.0	0.67	0.8	0.55	0.9	0.61	2	2	2
158	6.2	4741	1066	3300	742	2371	533	3300	742	4741	1066	3300	742	1.9	1.29	1.6	1.06	1.7	1.17	2	2	2
234	9.2	7022	1579	3300	742	3511	789	3300	742	7022	1579	3300	742	2.8	1.90	2.3	1.57	2.6	1.73	2	2	2
310	12.2	9304	2091	3300	742	4652	1046	3300	742	9304	2091	3300	742	3.8	2.52	3.1	2.08	3.4	2.29	3	3	2
386	15.2	11585	2604	3300	742	5792	1302	3300	742	11585	2604	3300	742	4.7	3.14	3.9	2.60	4.2	2.85	3	3	2
462	18.2	13866	3117	3300	742	6933	1559	3300	742	13866	3117	3300	742	5.6	3.76	4.6	3.11	5.1	3.42	5	4	2
538	21.2	16147	3630	3300	742	8074	1815	3300	742	16147	3630	3300	742	6.5	4.38	5.4	3.62	5.9	3.98	5	4	2
614	24.2	18428	4143	3300	742	9214	2071	3300	742	18428	4143	3300	742	7.4	5.00	6.1	4.13	6.8	4.54	5	5	3
690	27.2	20710	4656	3300	742	10355	2328	3300	742	20710	4656	3300	742	8.4	5.61	6.9	4.64	7.6	5.10	5	5	3
766	30.2	22991	5168	3300	742	11495	2584	3300	742	22991	5168	3300	742	9.3	6.23	7.7	5.15	8.4	5.67	7	6	3
842	33.2	25272	5681	3300	742	12636	2841	3300	742	25272	5681	3300	742	10.2	6.85	8.4	5.66	9.3	6.23	7	6	3
918	36.2	27553	6194	3300	742	13777	3097	3300	742	27553	6194	3300	742	11.1	7.47	9.2	6.17	10.1	6.79	7	7	4
994	39.2	29834	6707	3300	742	14917	3353	3300	742	29834	6707	3300	742	12.0	8.09	9.9	6.68	10.9	7.35	7	7	4

Additional standard belt widths are available in steps of 76.0 mm (2.99 in) Additional non-standard belt widths are available in steps of 12.7 mm (0.50 in).

1603	63.1	48090	10811	3300	742	24045	5405	3300	742	48090	10811	3300	742	19.4	13.04	16.0	10.77	17.6	11.85	11	11	6
------	------	-------	-------	------	-----	-------	------	------	-----	-------	-------	------	-----	------	-------	------	-------	------	-------	----	----	---

Additional standard belt widths are available in steps of 76.0 mm (2.99 in) Additional non-standard belt widths are available in steps of 12.7 mm (0.50 in).

1983	78.1	59490	13373	3300	742	29745	6687	3300	742	59490	13373	3300	742	24.0	16.13	19.8	13.33	21.8	14.66	15	14	7
------	------	-------	-------	------	-----	-------	------	------	-----	-------	-------	------	-----	------	-------	------	-------	------	-------	----	----	---

General belt tolerance is +0/-0.4% at 23°C/73°F. For exact belt width contact Customer Service. Non standard belt width on request.

Outer modules are always in PA6.6 on belts wider than 234 mm (9.21 in).

Belts up to 234 mm (9.21 in) in width is only available in PA6.6.

*Max. Load per Drive Sprocket. Belt material: POM-D 1000 N (225 lbf), PP 850 N (191 lbf), PA6.6 1000 N (225 lbf).

**Max. Spacing between wear strips, Carry: 152 mm (6 in); Return: 304 mm (12 in).

Any questions? Please contact us.

Morskate Aandrijvingen BV

Oosterveldsingel 47A
7558 PJ Hengelo (Ov)
The Netherlands

NL

T +31 (0)74 - 760 11 11
info@morskateaandrijvingen.nl
www.morskateaandrijvingen.nl

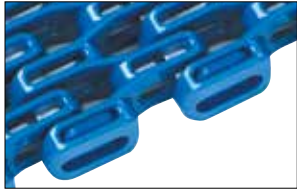
DE

T +49 692 - 222 34 95
info@morskateantriebstechnik.de
www.morskateantriebstechnik.de

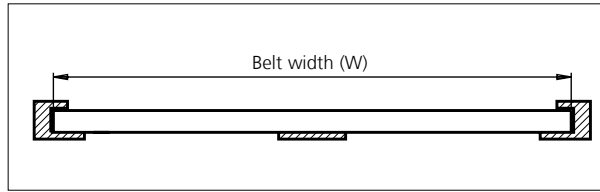
EN

T +31 (0)74 - 760 11 11
info@morskatedrivetechnology.com
www.morskatedrivetechnology.com

Belt Tracking and Control Systems



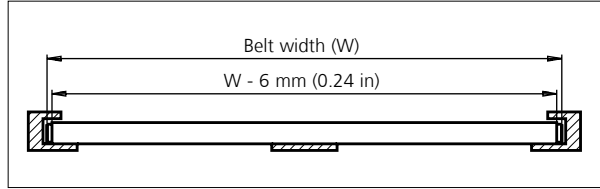
uni Flex SNB L R2.3
Standard



Basic belt types can be combined with the belt tracking and control systems below to enhance performance. Basic belt types can be combined with the belt tracking and control systems below to enhance performance.



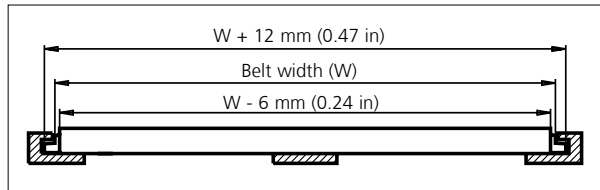
Wearpart



Wearpart system made of heat and wear resistant nylon to reduce the friction between belt edge and wearstrip. Only this part needs to be replaced when it has been worn out, not the entire belt.



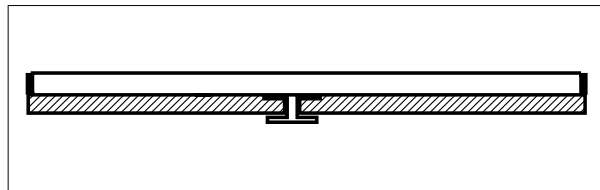
O-Tab



Outer edge tab system made of heat and wear resistant nylon to reduce the friction between belt edge and wearstrip. Using a slotted wear-strip, the O-Tab will track the belt and allow the conveyed products to be wider than the belt.
Height of O-Tab: 6.4 mm (0.25 in)
Height of slot: 8.0 mm (0.31 in)



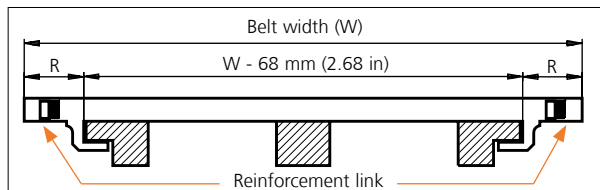
I-Tab



Intermediate tabs (I-Tab) are placed on the bottom side of the belt to hold it down on incline conveyors. The intermediate tabs will fit anywhere across the belt bottom and at pitch multiples of 12.7 mm (0.50 in).



S-Tab



Side tab (S-Tab) for holding the belt down. Normally used for wide belts. With S-Tabs, modular A/S recommend that the radial forces in the curve are transferred by the inside edge of the belt – similar to uni Flex SNB L and uni Flex SNB W.
R = 34.0 mm (1.34 in).

Type	Belt tracking and control combination			
	Wearpart	O-Tab	S-Tab	I-Tab
uni Flex SNB L R2.3	+	+	-	+
uni Flex SNB C R1.6	+	+	-	-
uni Flex SNB CR R2.3	+	+	-	-
uni Flex SNB W R2.3	✓	-	-	+
uni Flex SNB WT R2.3	-	-	✓	+
uni Flex SNB WO R2.3	-	✓	-	+

When using S-Tabs, please verify sufficient clearance to the shaft. Max. shaft diameter = Sprocket pitch diameter - 50.8 mm (2.00 in).

When using square shafts, please verify that the diagonal does not exceed max. diameter.

Example: Sprocket z = 10: Max. shaft diameter 82.2 - 50.8 = ø31 mm (3.24 - 2.00 = ø1.2 in).

✓ *Standard* + *Optional*

- *Unavailable*

Any questions? Please contact us.

Morskate Aandrijvingen BV

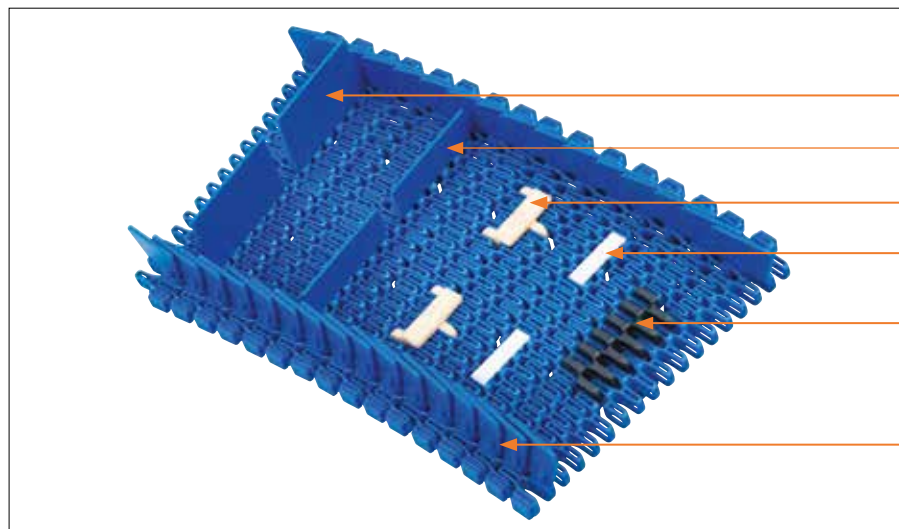
Oosterveldsingel 47A
7558 PJ Hengelo (Ov)
The Netherlands

NL
T +31 (0)74 - 760 11 11
info@morskateaandrijvingen.nl
www.morskateaandrijvingen.nl

DE
T +49 692 - 222 34 95
info@morskateantriebstechnik.de
www.morskateantriebstechnik.de

EN
T +31 (0)74 - 760 11 11
info@morskatedrivetechnology.com
www.morskatedrivetechnology.com

Accessories



- Click on Flight 50.8 mm (2.00 in)
- Click on Flight 25.4 mm (1.00 in)
- Rubber Support: Made-To-Order
- Click on Flight Low: Made-To-Order
- Rubber Top
- Side Guard

Accessories

Side Guard / Standard

Type	Belt material & color	Height	
		mm	in
Side Guard	PP-I B W	30.0	1.18

Accessories

Flight / Standard

Type	Belt material & color	Link size	Height		Width	
			mm	in	mm	in
Flat	PA6.6 B W	K300	25.4	1.00	75.9	2.99
	PP B W		50.8	2.00	75.9	2.99

Support / MTO

Type	Support material & color	H		Width		Length	
		mm	in	mm	in	mm	in
Rubber Support	01 N	4.0	0.16	43.0	1.69	14.0	0.55
Click on Flight Low	POM-D W	4.0	0.16	42.0	1.65	10.5	0.41

Accessories

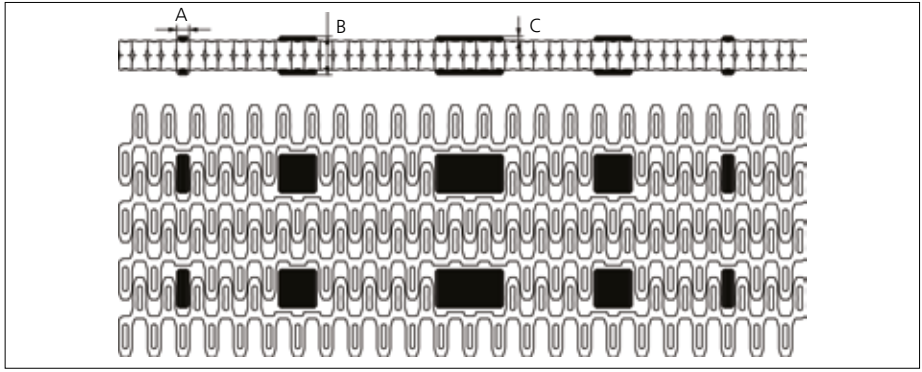
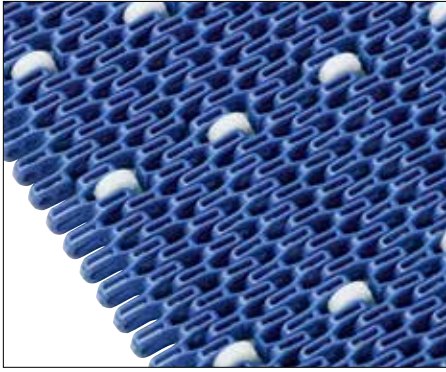
Minimum Indents (I)

Type	Rubber Top				Side Guard				Click on Flights without Side Guard				Click on Flights with Side Guard			
	Left		Right		Left		Right		Left		Right		Left		Right	
	mm	in	mm	in	mm	in	mm	in	mm	in	mm	in	mm	in	mm	in
uni Flex SNB CR R1.6	26.5	1.04	26.5	1.04	-	-	-	-	-	-	-	-	-	-	-	-
uni Flex SNB L R2.3	-	-	-	-	23.0	0.91	17.0	0.67	10.0	0.39	16.0	0.63	26.0	1.02	32.0	1.26
uni Flex SNB C R2.3	6.5	0.26	6.5	0.26	-	-	-	-	-	-	-	-	-	-	-	-
uni Flex SNB W R2.3	75.9	2.99	75.9	2.99	38.0	1.50	32.0	1.26	38.0	1.50	32.0	1.26	54.0	2.13	48.0	1.89
uni Flex SNB WO R2.3	75.9	2.99	75.9	2.99	38.0	1.50	32.0	1.26	38.0	1.50	32.0	1.26	54.0	2.13	48.0	1.89
uni Flex SNB WT R2.3*	75.9	2.99	75.9	2.99	63.0	2.48	58.0	2.28	38.0	1.50	32.0	1.26	79.0	3.11	74.0	2.91
uni Flex SNB WT R2.3**	75.9	2.99	75.9	2.99	63.0	2.48	58.0	2.28	51.0	2.01	45.0	1.77	79.0	3.11	74.0	2.91

* Even distance between Click on Flight rows

** Odd distance between Click on Flight rows

Made-To-Order Selection



uni Flex SNB with Rollers
 ø17 x 5.5 mm (ø0.67 x 0.22 in)

Made-To-Order Materials: POM-D, PP, PA6.6 and Roller Material POM-D.
 Non standard Roller material and color: See uni Material and Color view.

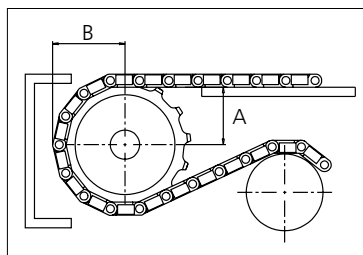
Type	Roller material & color	A		B		C	
		mm	in	mm	in	mm	in
Plastic	POM-D W	5.5	0.22	17.0	0.67	2.0	0.08
		17.0	0.67				
		30.0	1.18				

Sprocket

No of teeth	Pilot Bore	Bore size												Overall diameter		Pitch diameter		Hub diameter		A-dimension		B-dimension		Single row/Two way	Double row/Two way	Molded	Machined
		in	0.75	0.79	0.98	1.00	1.18	1.25	1.50	1.57	2.36	2.50	3.54														
		mm	19.1	20.0	25.0	25.4	30.0	31.8	38.1	40.0	60.0	63.5	90.0	mm	in	mm	in	mm	in	mm	in						
Z09	x			■	●	●	●					73.8	2.91	74.3	2.93	56.8	2.24	28.4	1.12	43.5	1.71	x		x			
Z10	x			■	●	●	●		●			82.2	3.24	82.2	3.24	65.2	2.57	32.6	1.28	47.5	1.87	x		x			
Z12	x				●	●	●	■	■			98.8	3.89	98.1	3.86	70.0	2.76	40.9	1.61	55.5	2.19	x		x			
Z15	x				●	●	●	■	■	■		123.5	4.86	122.2	4.81	70.0	2.76	53.2	2.09	67.5	2.66	x		x			
Z18	x					●	●	■	■	■	■	148.1	5.83	146.3	5.76	70.0	2.76	65.5	2.58	79.6	3.13	x		x			
Z19	x					●	●	■	■	■	■	156.2	6.15	154.3	6.07	70.0	2.76	69.6	2.74	83.6	3.29	x		x			

■ Molded sprocket

● Molded sprocket



Non standard material and color: See uni Material and Color Overview.

Other sprocket sizes are available upon request
 Two-part sprocket are available upon request
 Other bore sizes are available upon request
 uni Retainer Rings: See uni Retainer Ring data sheet
 Width of tooth = 4.0 mm (0.16 in)
 Width of sprocket = 30.0 mm (1.18 in)

Max load per sprocket shown does not take bore size into account.
 Please also ensure that sufficient size shaft is chosen for corresponding load.
 For correct sprocket position: See uni Assembly Instructions for uni Flex ASB.

Any questions? Please contact us.

Morskate Aandrijvingen BV

Oosterveldsingel 47A
 7558 PJ Hengelo (Ov)
 The Netherlands

NL
 T +31 (0)74 - 760 11 11
 info@morskateaanrijvingen.nl
 www.morskateaanrijvingen.nl

DE
 T +49 692 - 222 34 95
 info@morskateantriebstechnik.de
 www.morskateantriebstechnik.de

EN
 T +31 (0)74 - 760 11 11
 info@morskatedrivetechnology.com
 www.morskatedrivetechnology.com